

**Amy Kim Keeler**

Future Jupiter

July 18 – August 29, 2020

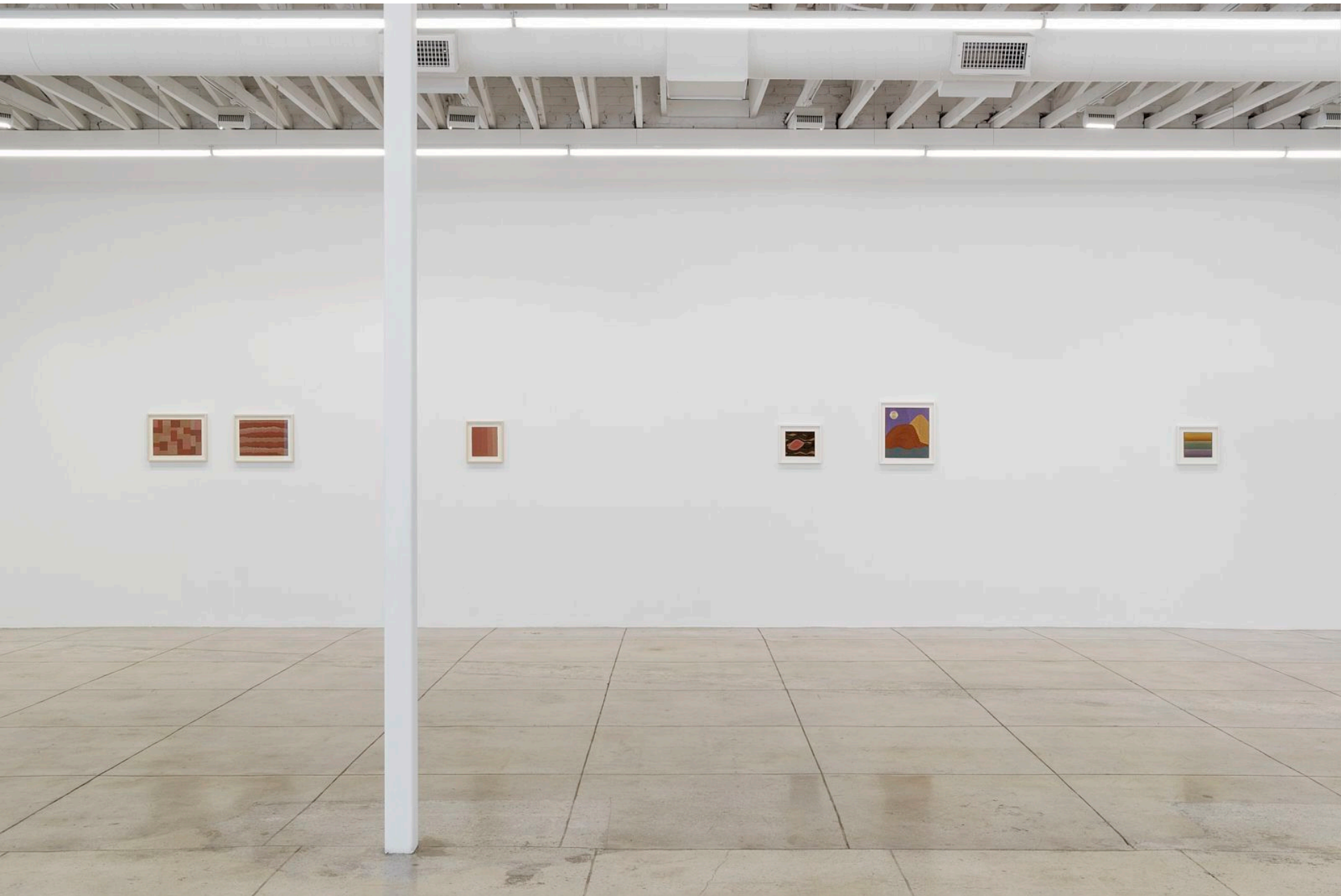
Lowell Ryan Projects is pleased to present Future Jupiter, a solo-exhibition by LA-based artist Amy Kim Keeler. The show will feature sixteen of her intimately-sized works all hand-stitched in cotton thread on corrugated cardboard. For each, Keeler balances precision with intuition, speaking in a nonobjective vocabulary that emphasizes seriality, geometry, and gradation of color. Expansive and intimate, organic and mathematical, her work achieves a spiritualism both rooted in and transcendent of the natural world.

Keeler's artistic practice grows out of the spiritual belief system Anthroposophy, a philosophical movement founded in the early 20th century by Rudolph Steiner that propounds inner development through imagination, inspiration, and intuition. Occupying a space between mysticism and empiricism, Anthroposophists believe that a person's every action, thought, and feeling directly impacts our collective future—a new condition of consciousness (defined by perfected imagination) called Future Jupiter, for which the exhibition is titled.

Through this lens, Keeler finds immense metaphysical weight and aesthetic beauty in even the most seemingly inconsequential of gestures: tree trunk patterns; rock and crystal formations; the flow of water and the paths it carves. These are natural phenomena created over the course of hundreds and thousands of years, so out of sync with the human scale of time that it can be easy to forget that they are not fixed entities, but rather material in an ongoing process of creation.

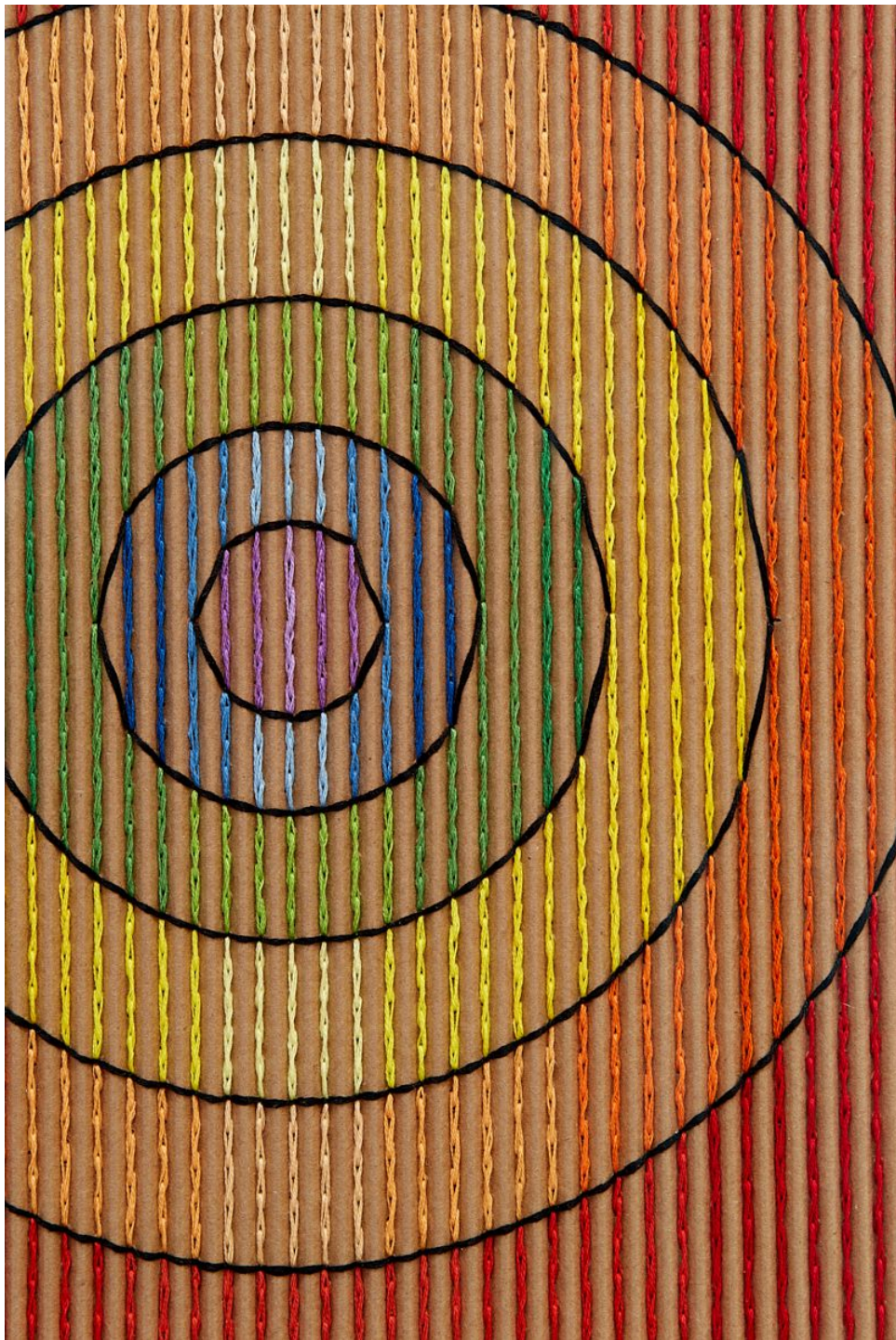
In this same vein, Keeler engages her material gradually, discovering aesthetic potentials through the slow, repetitive process of threadwork. Stitches are tiny, humble, disciplined gestures (so unlike a brushstroke); only by accumulation can they achieve an extraordinary coherence of textures, patterns and movement. In this way, Keeler's work can be thought of as the tangible result of "spiritual research;" the mundanity of her material, the natural rhythms of her process, and the organic precision of her form reverberate with and testify to the cosmic weight of our every individual gesture.

To believe this—that we are all co-creators of the future, always at work, often making infinitesimal marks—is both a hopeful and terrifying doctrine to live by. It installs every one of us at the helm of the ship that is our world, and while we get to steer our own path, that round-the-clock post vests us with massive responsibility. But that might be exactly what is needed at this moment in time: to do away with the deus ex machina "it'll all work out" swagger, and to instead walk through life consciously abiding an individual duty to a future larger than any one person.



Amy Kim Keeler  
Finding the Way, 2020  
Cotton thread on corrugated cardboard  
11.75h x 10w inches  
(15h x 13.25w inches framed)  
AKK-001

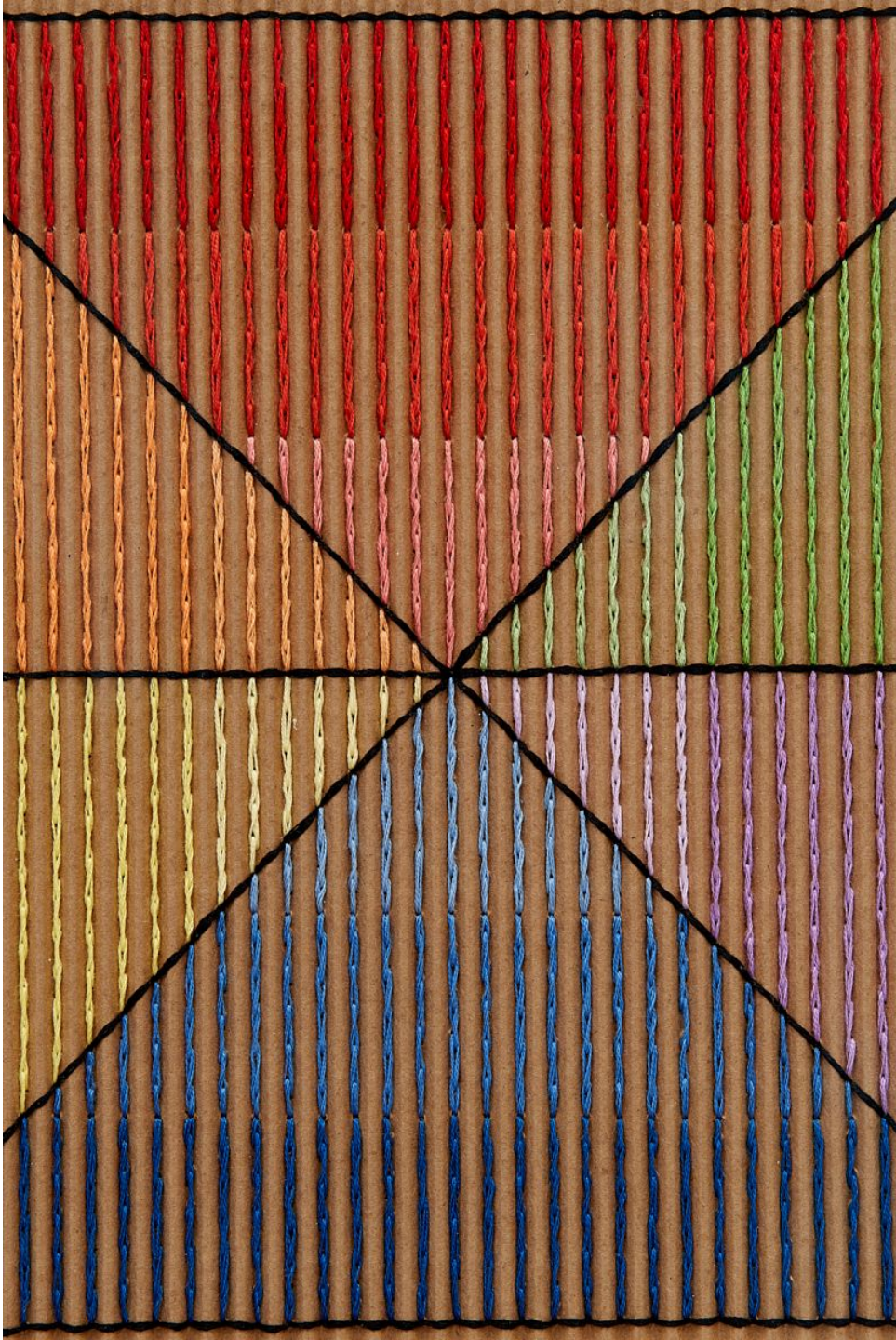




Amy Kim Keeler  
Finding the Way, 2020  
(detail)

Amy Kim Keeler  
Before and After, 2020  
Cotton thread on corrugated cardboard  
10.5h x 10w inches  
(13.5h x 13w inches framed)  
AKK-002





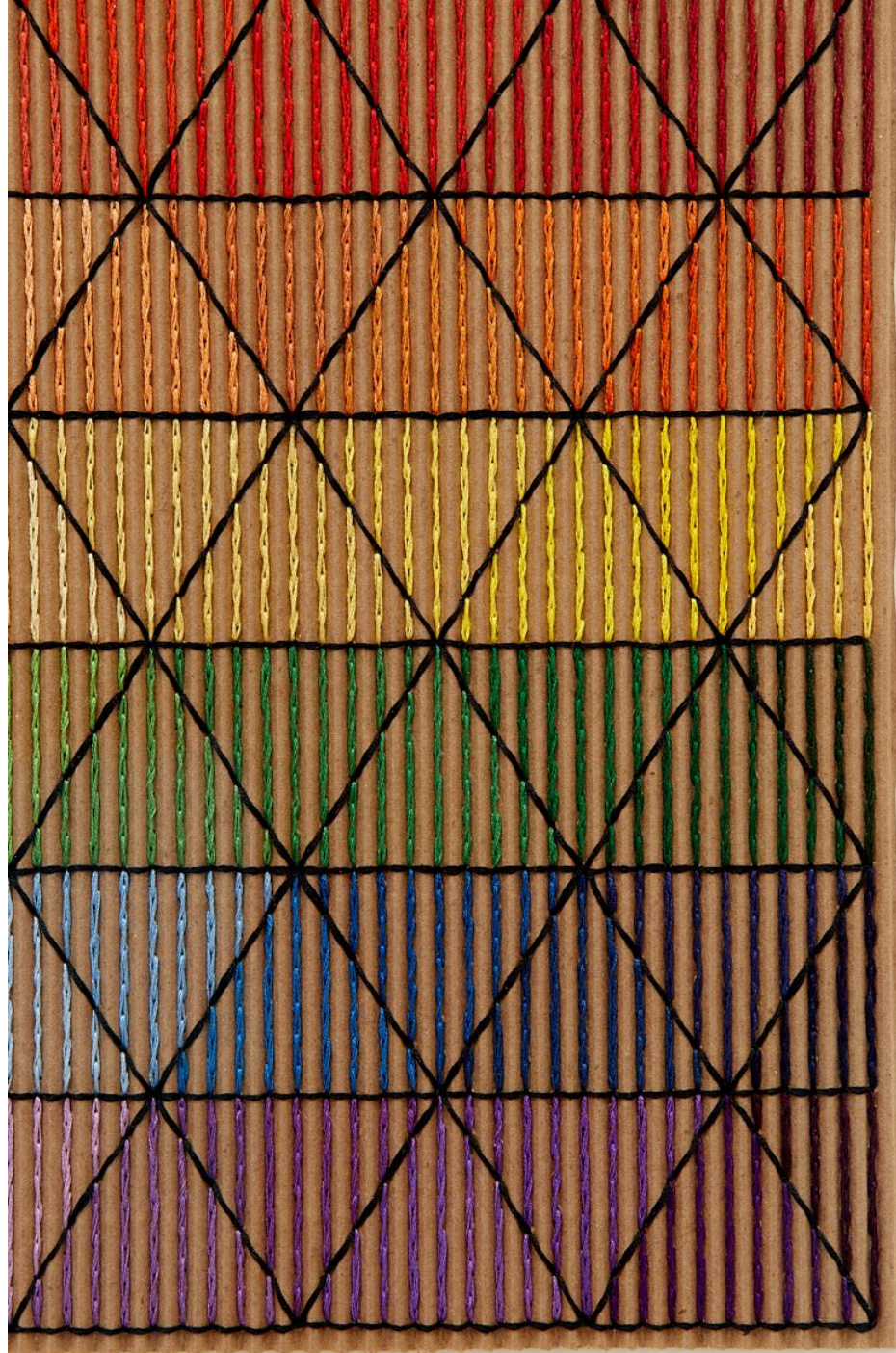
Amy Kim Keeler  
Before and After, 2020  
(detail)





Amy Kim Keeler  
Astral Evolution, 2020  
Cotton thread on corrugated cardboard  
12.25h x 10.5w inches  
(15.5h x 13.5w inches framed)  
AKK-003

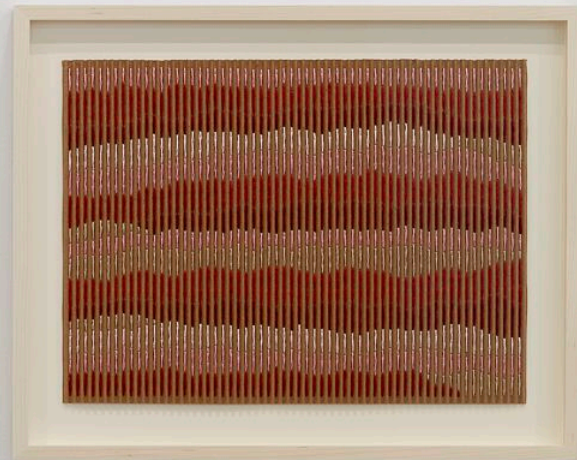
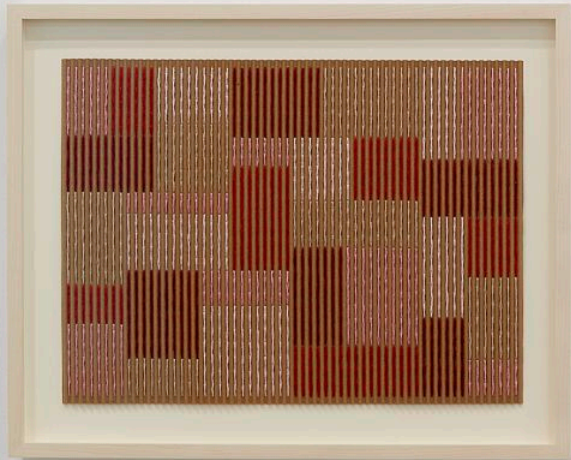


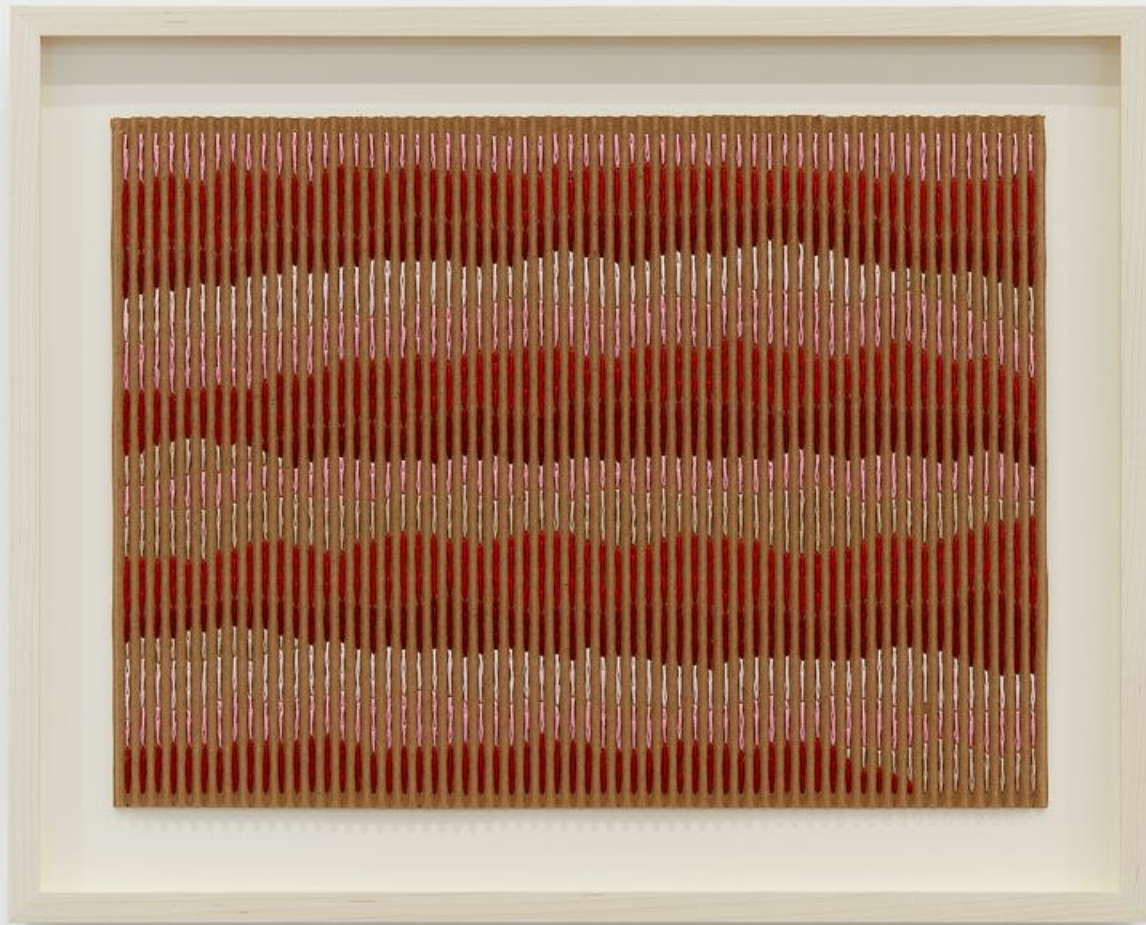


Amy Kim Keeler  
Astral Evolution, 2020  
(detail)



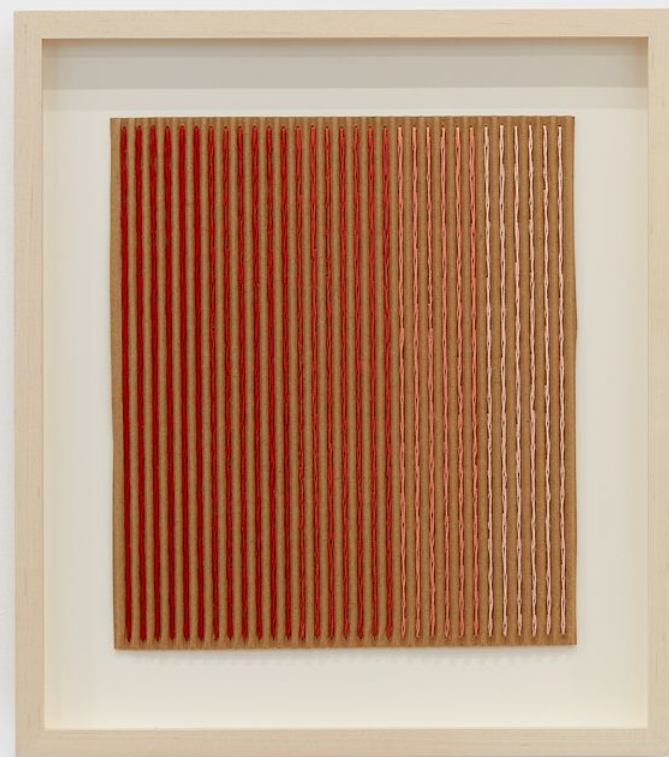
Amy Kim Keeler, *Divining Rod*, 2019  
Cotton thread on corrugated cardboard  
11.25h x 15.25w inches (15h x 18.5w inches framed)





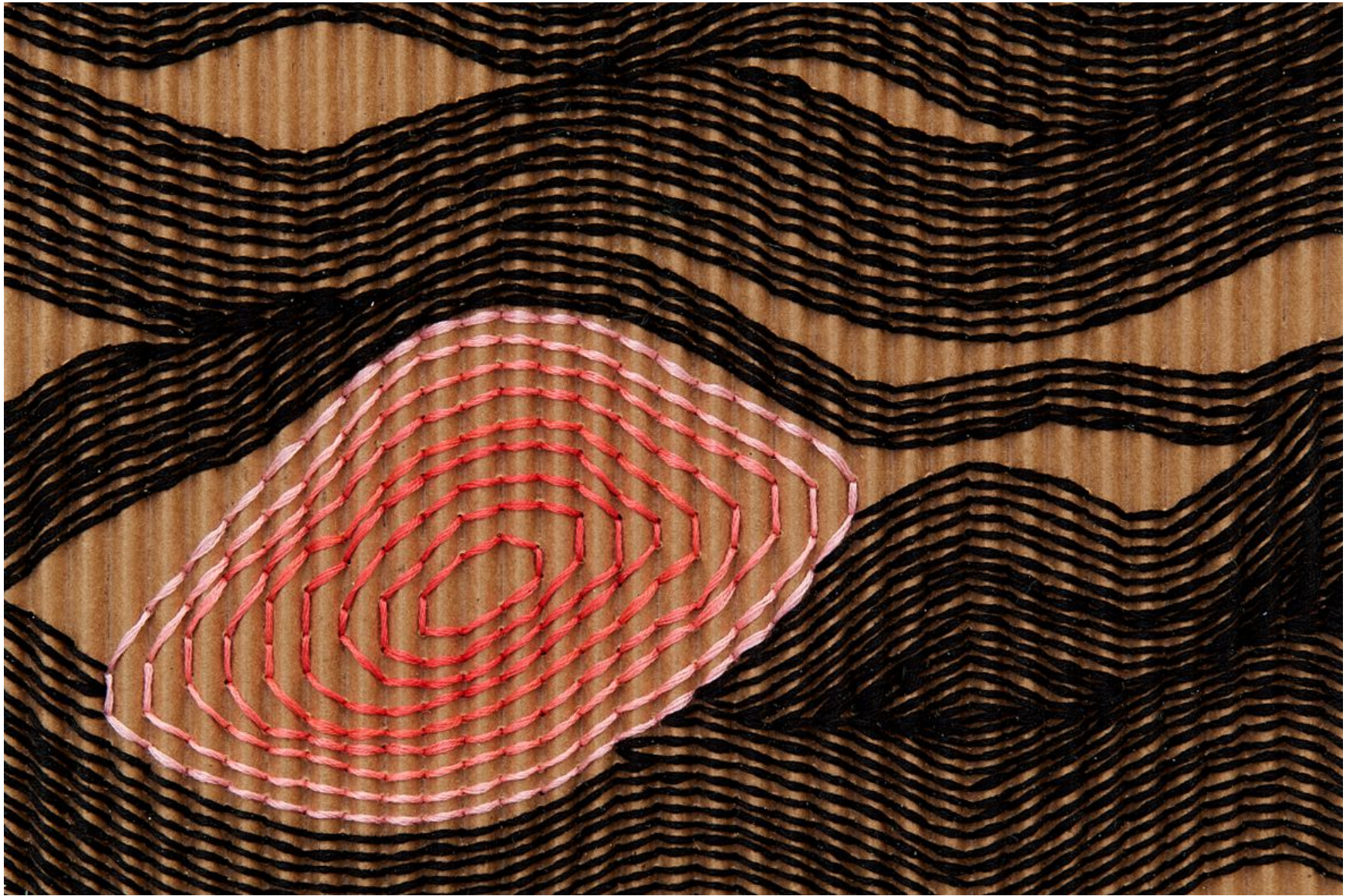
Amy Kim Keeler, *Somewhere in the Middle*, 2019  
Cotton thread on corrugated cardboard  
11.25h x 15.25w inches (15h x 18.5w inches framed)

Amy Kim Keeler  
Antithesis, 2018  
Cotton thread on corrugated cardboard  
9.25h x 8w inches  
(13h x 11.5w inches framed)  
AKK-006





Amy Kim Keeler, *Another Universe*, 2019  
Cotton thread on corrugated cardboard  
7.75h x 9.25w inches (12h x 13.25w inches framed)



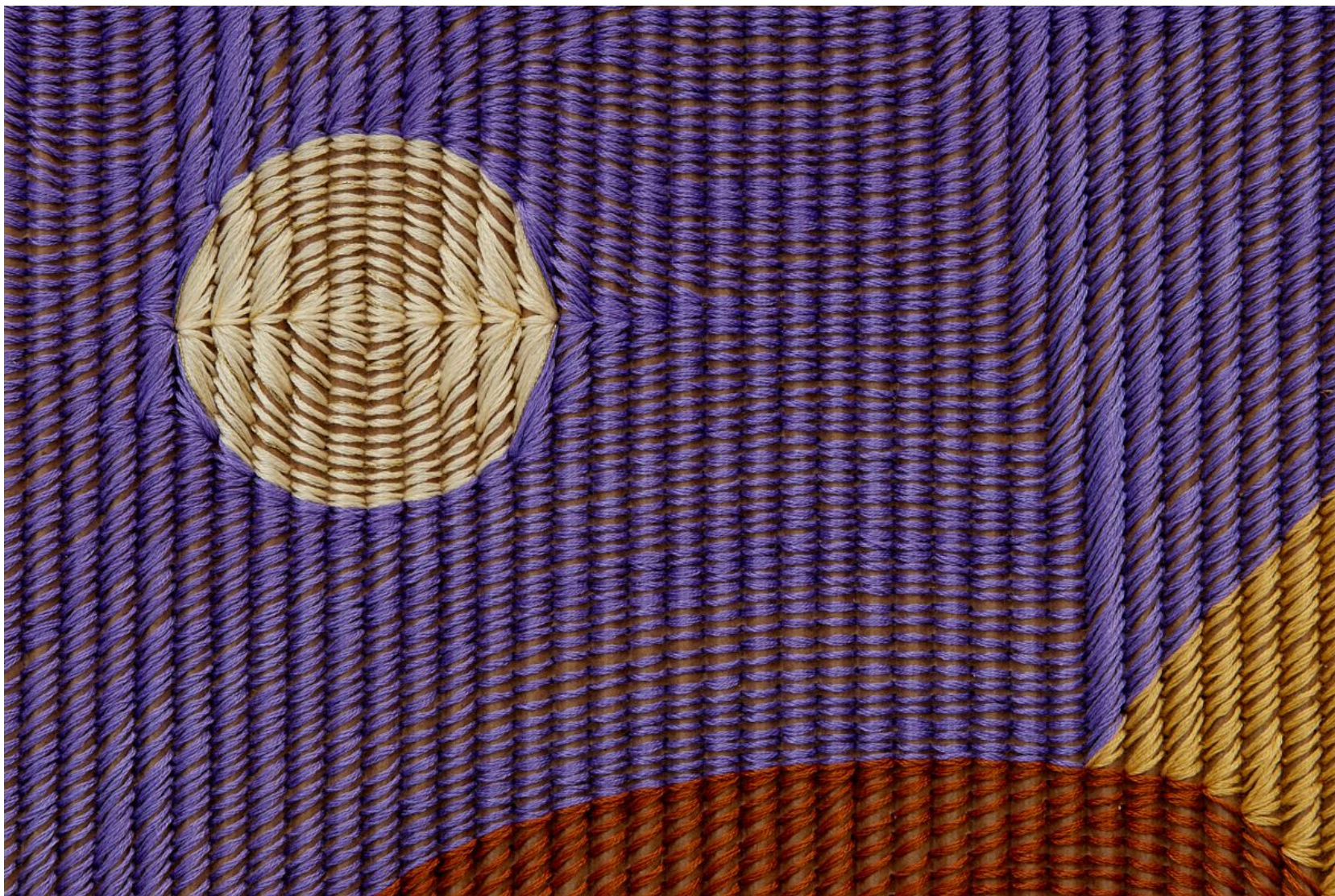
Amy Kim Keeler, *Another Universe*, 2019  
(detail)



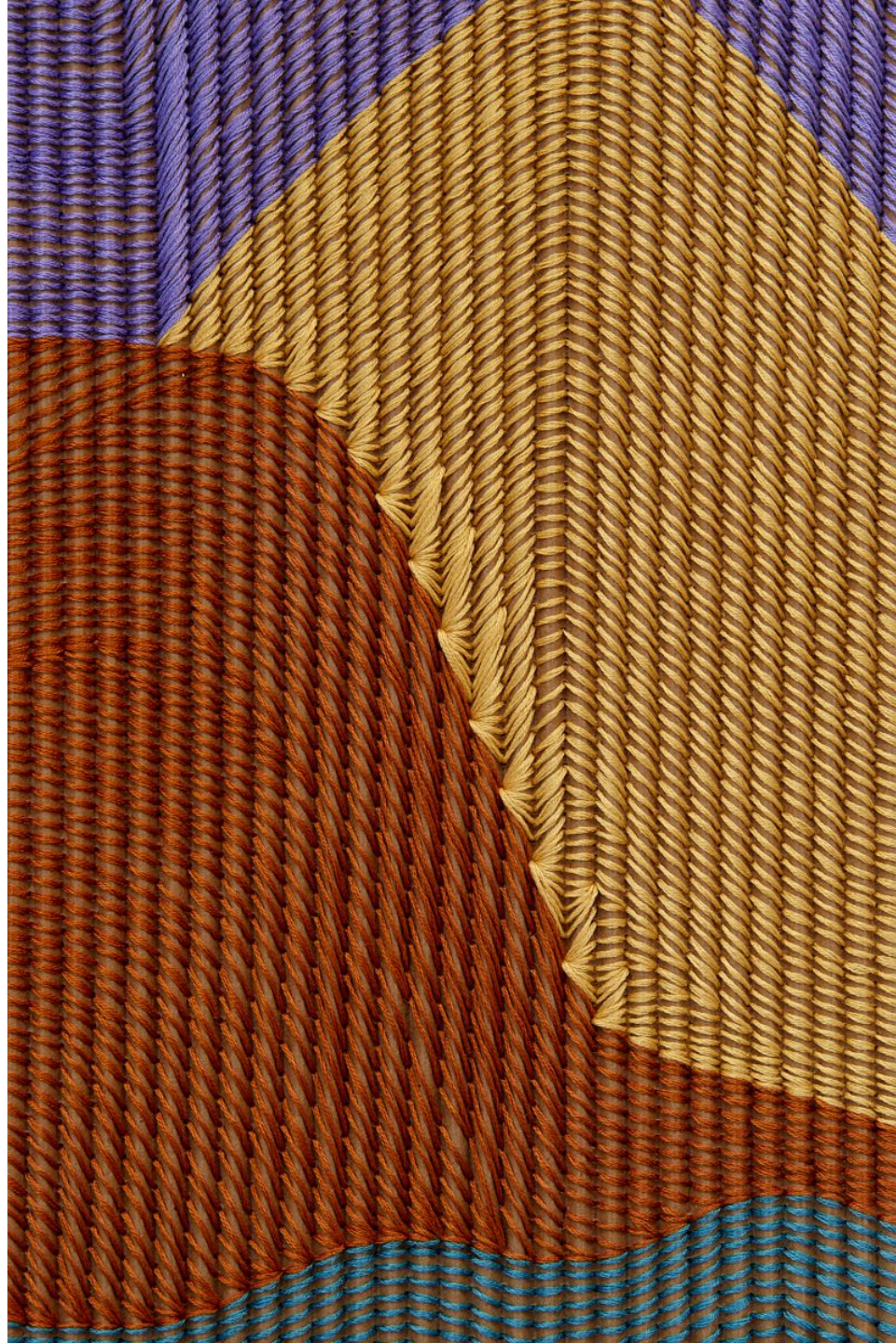


Amy Kim Keeler  
Magnetic Mountain, 2019  
Cotton thread on corrugated cardboard  
16h x 14w inches  
(19.5h x 17.5w inches framed)  
AKK-008





Amy Kim Keeler  
Magnetic Mountain, 2019  
(detail)



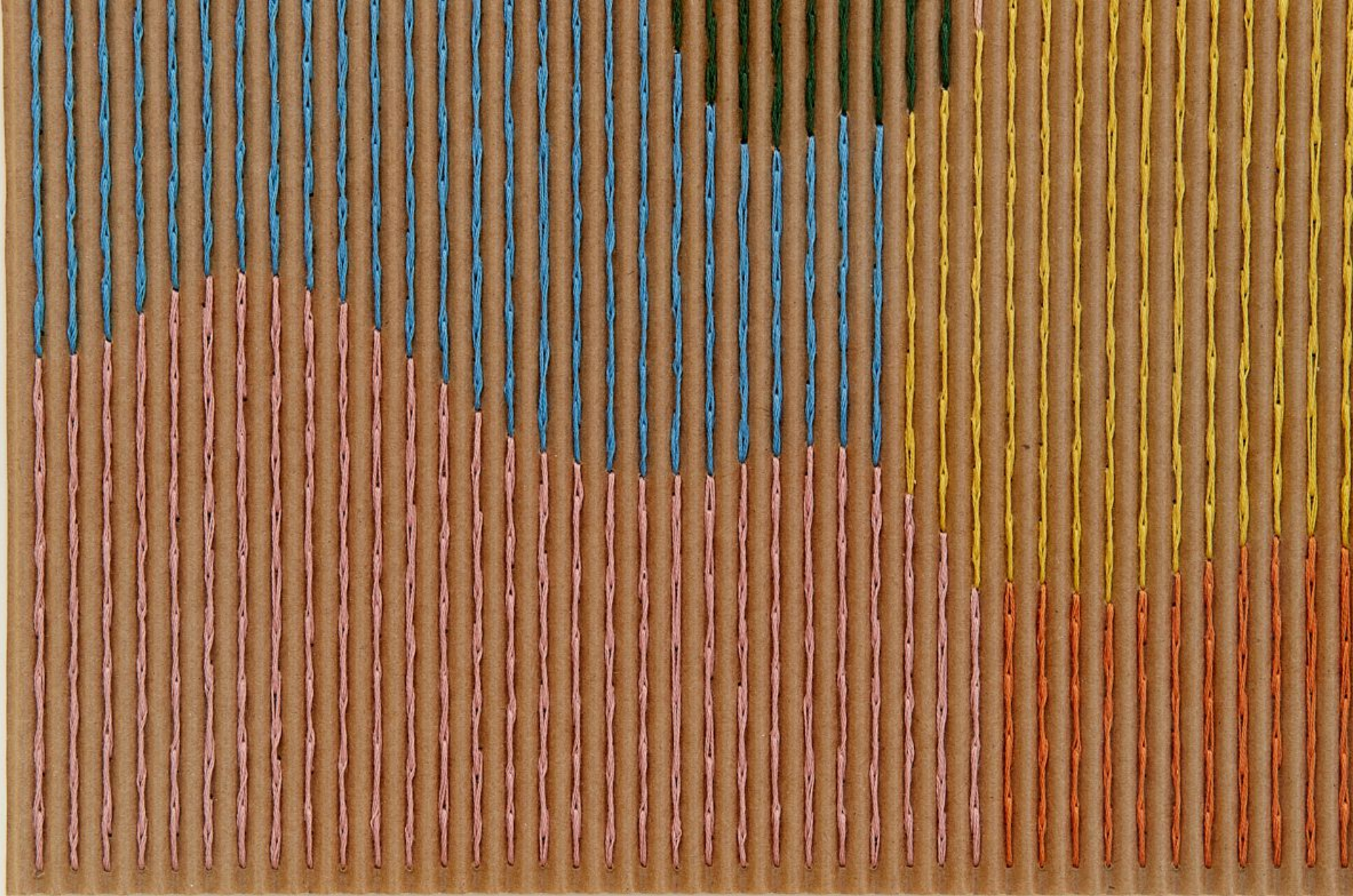
Amy Kim Keeler  
Magnetic Mountain, 2019  
(detail)



Amy Kim Keeler, *Just Below the Surface*, 2019  
Cotton thread on corrugated cardboard  
8h x 8.75w inches, (12h x 13w inches framed)



Amy Kim Keeler, *They Know The Way*, 2019  
Cotton thread on corrugated cardboard  
22.5h x 22.75w inches (26.25h x 26.25 inches framed)



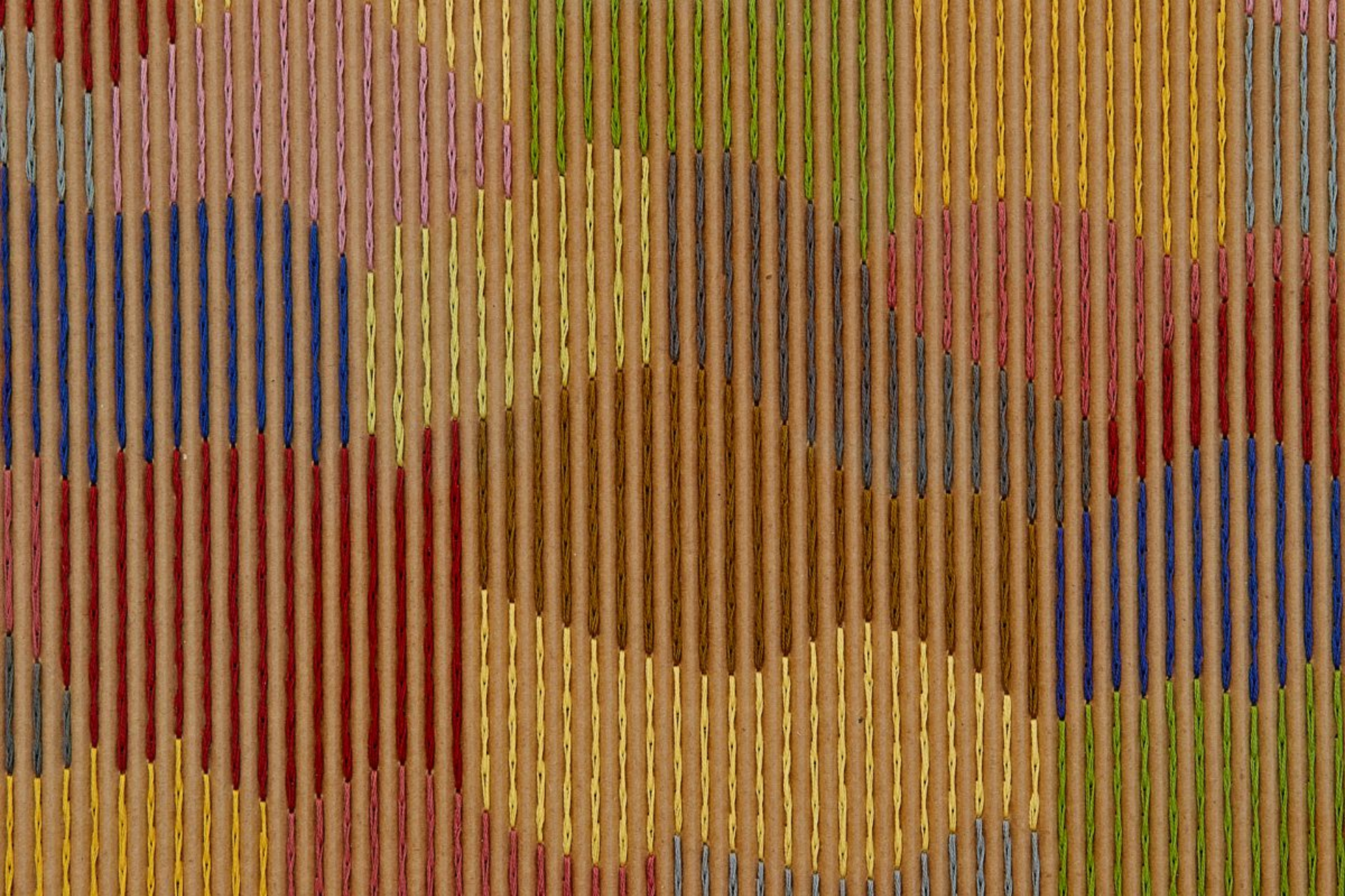
Amy Kim Keeler, *They Know The Way*, 2019  
(detail)







Amy Kim Keeler, *From Now On*, 2018  
Cotton thread on corrugated cardboard  
23h x 30.75w inches (26.5h x 34.25w inches framed)



Amy Kim Keeler, From Now On, 2018  
(detail)



Amy Kim Keeler, *Threshold Consciousness*, 2020  
Cotton thread on corrugated cardboard  
8.5h x 9w inches (11.75h x 12.5w inches framed)





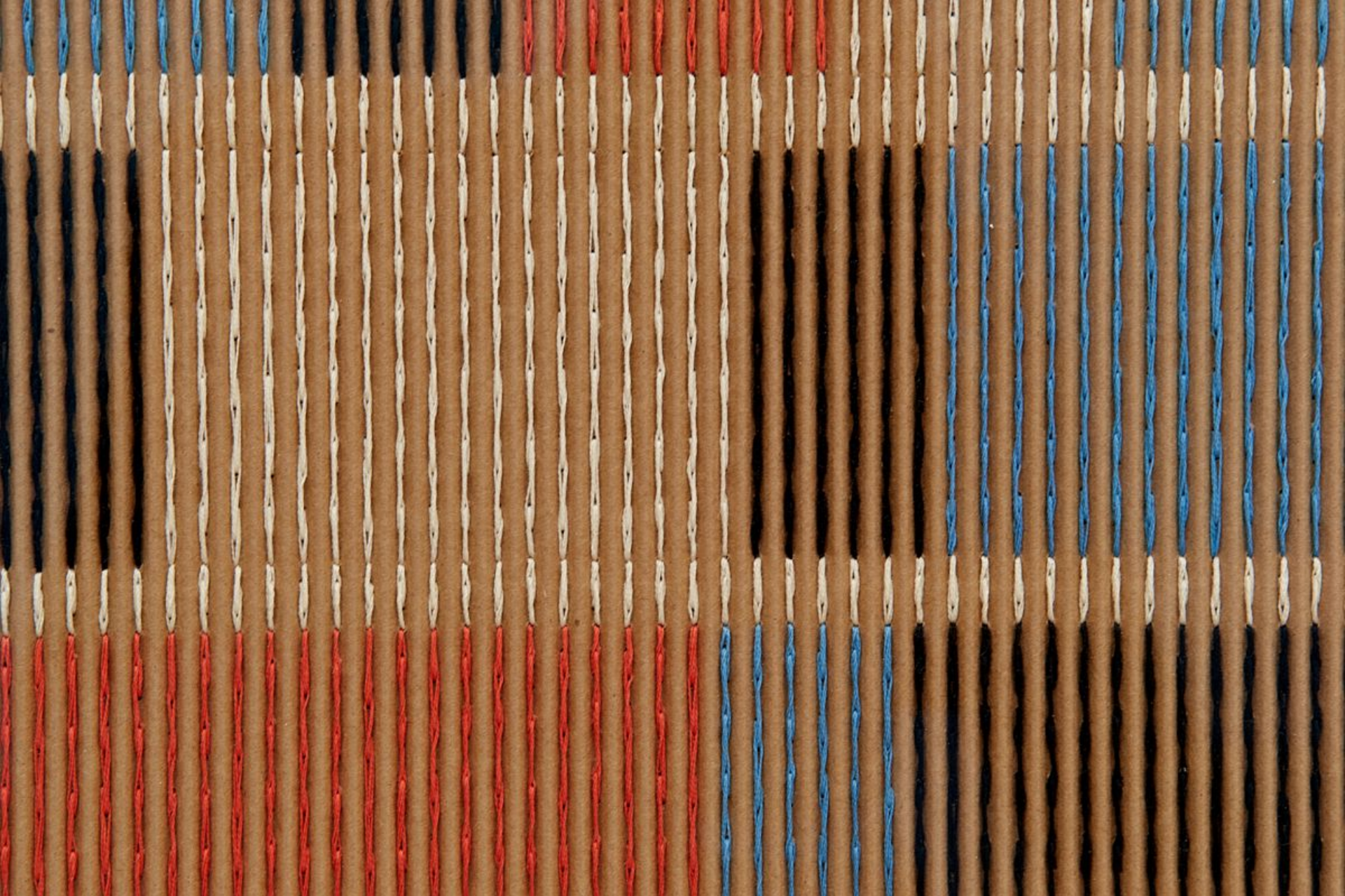
Amy Kim Keeler, *Neither Day nor Night*, 2020  
Cotton thread on corrugated cardboard  
8h x 8.75w inches (11.25h 12w inches framed)

Amy Kim Keeler, *Neither Day nor Night*, 2020  
(detail)





Amy Kim Keeler, *Old Moon Consciousness*, 2020  
Cotton thread on corrugated cardboard  
22.75h x 23w inches (26.25h x 26.5w inches framed)

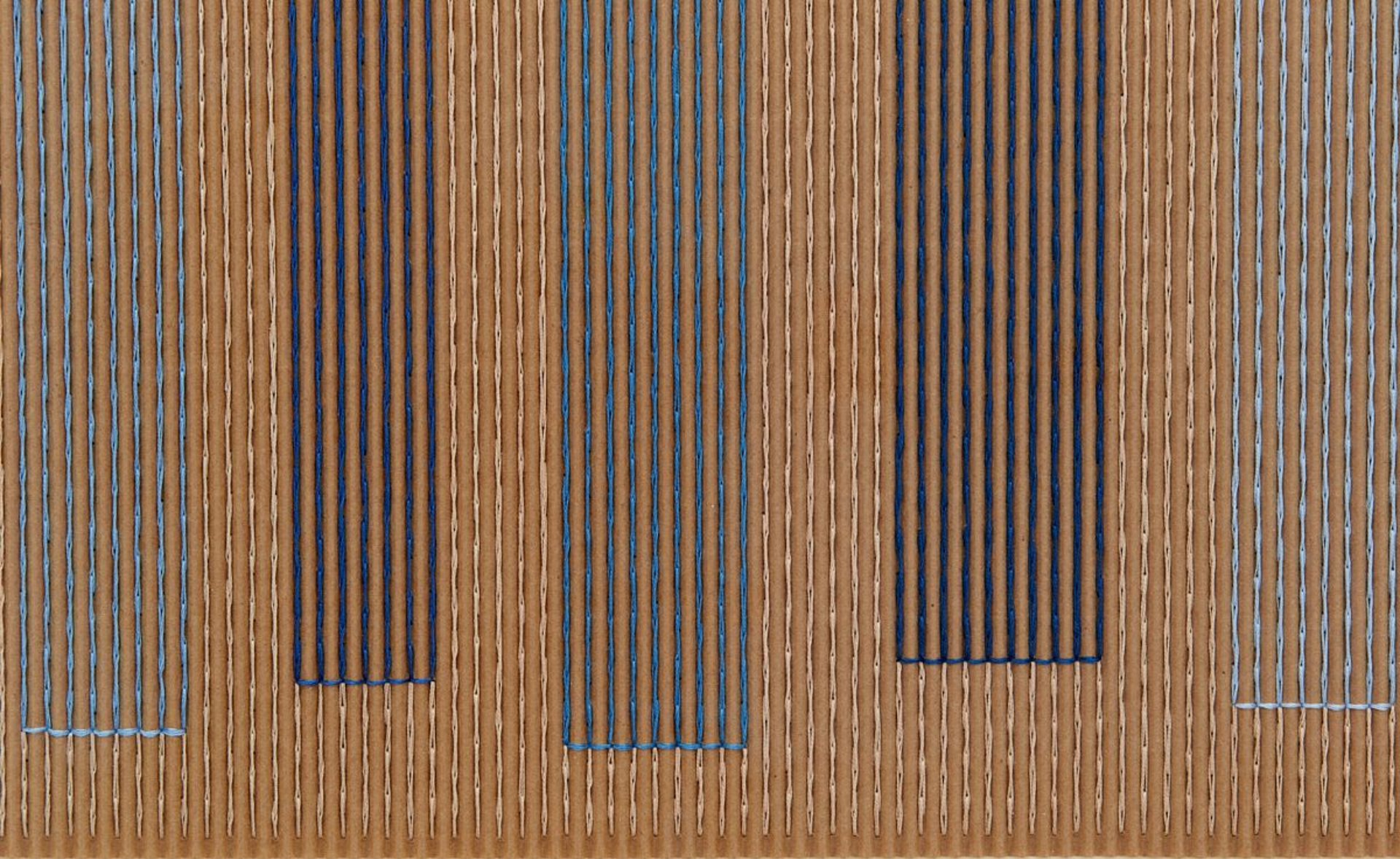


Amy Kim Keeler, *Old Moon Consciousness*, 2020  
(detail)

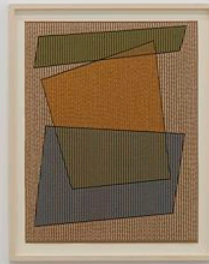




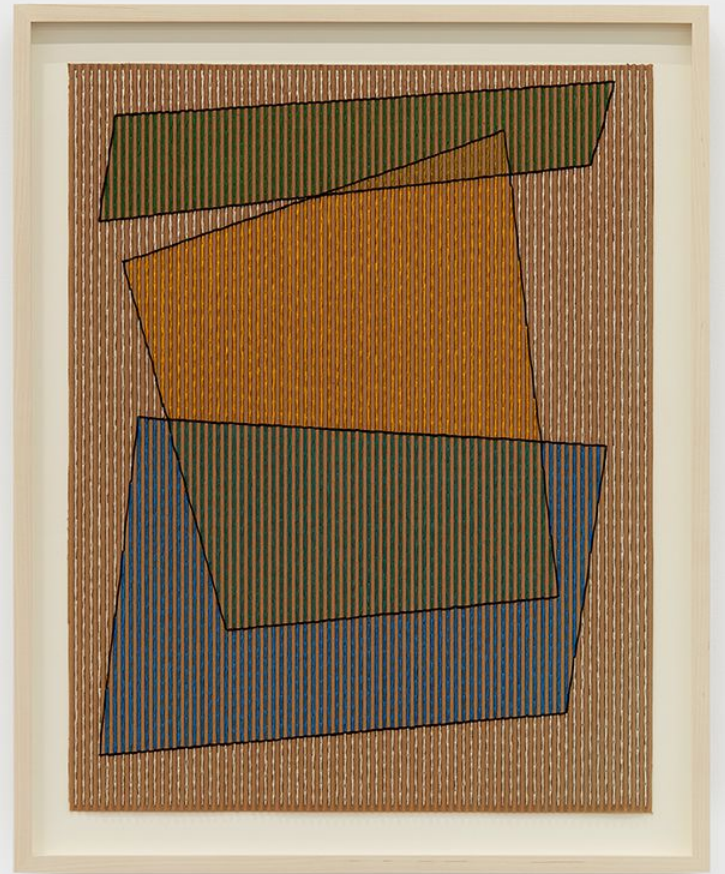
Amy Kim Keeler, *Everything is Connected*, 2019  
Cotton thread on corrugated cardboard  
23.5h x 24w inches (26h x 27.5w inches framed)

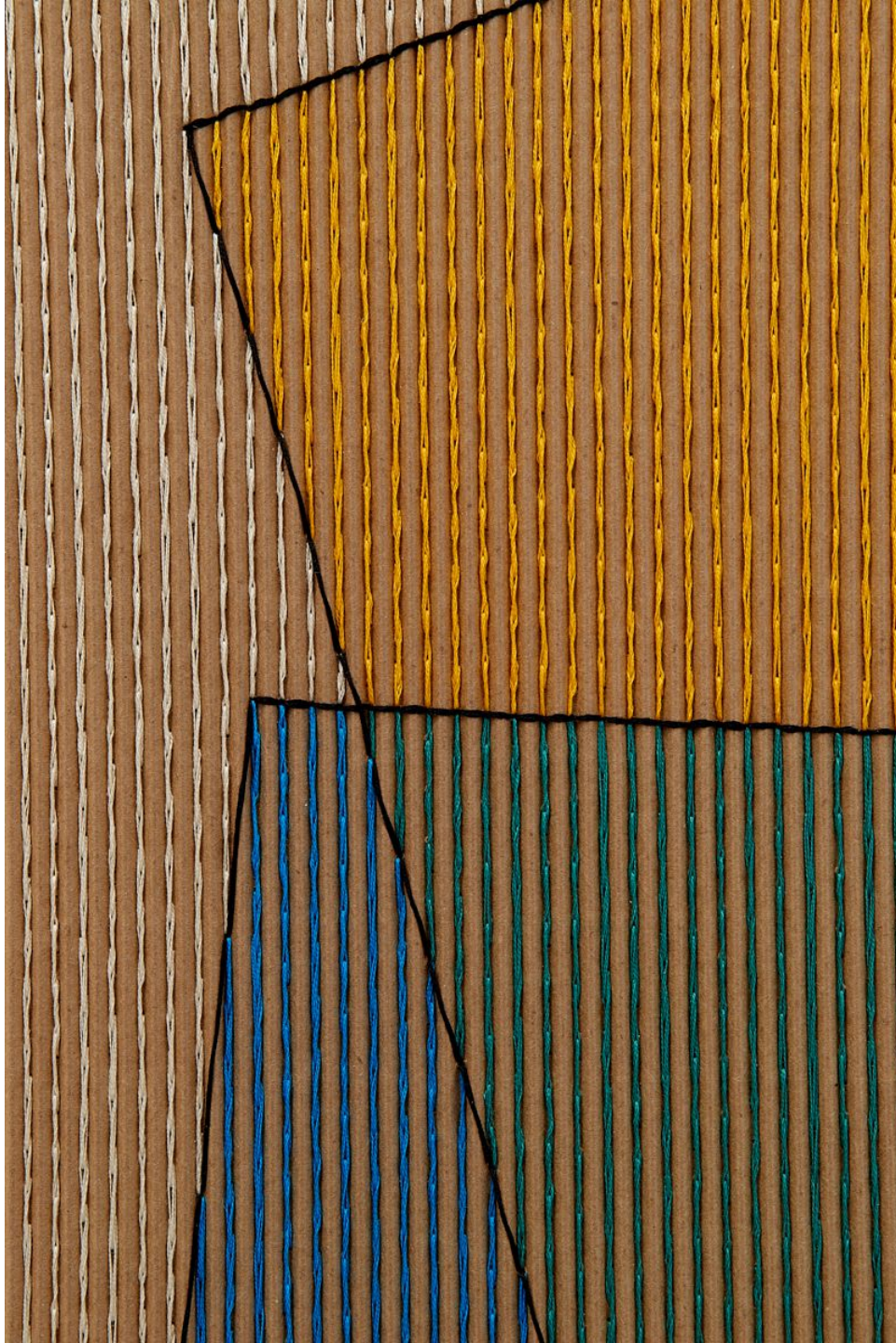


Amy Kim Keeler, Everything is Connected, 2019  
(detail)



Amy Kim Keeler  
Between Death and Rebirth, 2020  
Cotton thread on corrugated cardboard  
23.5h x 18.5w inches  
(27.5h x 22w inches framed)  
AKK-016





Amy Kim Keeler  
Between Death and Rebirth, 2020  
(detail)

