

Allison Lu Wang

splash, drip, drip, woo, splash

July 23 - July 31, 2022

***Please note the address in Silver Lake:

3118 Sunset Blvd.

Los Angeles, CA 90026

Lowell Ryan Projects is pleased to present a solo exhibition by Los Angeles-based artist Allison Lu Wang (b. 1994, Los Angeles, CA) titled *splash, drip, drip, woo, splash*. Composed of nine paintings, 48h by 36w inches in scale, all archival ink on linen, this will be Wang's first exhibition with the gallery. In these recent works, Allison Lu Wang depicts various landscapes that are a reflection of the world she lives in both literally and figuratively. Her cinematic use of color and manipulation of imagery create works that take the viewer on a journey through time and place within the blink of an eye.

Wang's process of landscape painting—or one might call landscape building—pulls from disparate sources in her life, imagination, experiences and fascinations. Her process begins in an analog format sourcing various printed images cut from magazines, books, etc., as well as directly painted elements, such as an orchid in her studio rendered in oil paint. Entering the digital realm, photographs of these collages and painted images are further expanded upon and manipulated on the computer. There is always a sense of place, whether a more direct image from a street in her native Los Angeles or a scene from a favorite movie or video game. Pictorially no subject matter is treated with more or less importance, however direct cinematic and pop-cultural references can take on greater significance conceptually to the artist. Anakin Skywalker's transformation into Darth Vader—consumed by paranoia, power and greed, and Cobb's team in *Inception* standing on a street awaiting an unknown force take on both emotional and contextual significance to the artist—references to real life emotions played out in a fantastical realm.

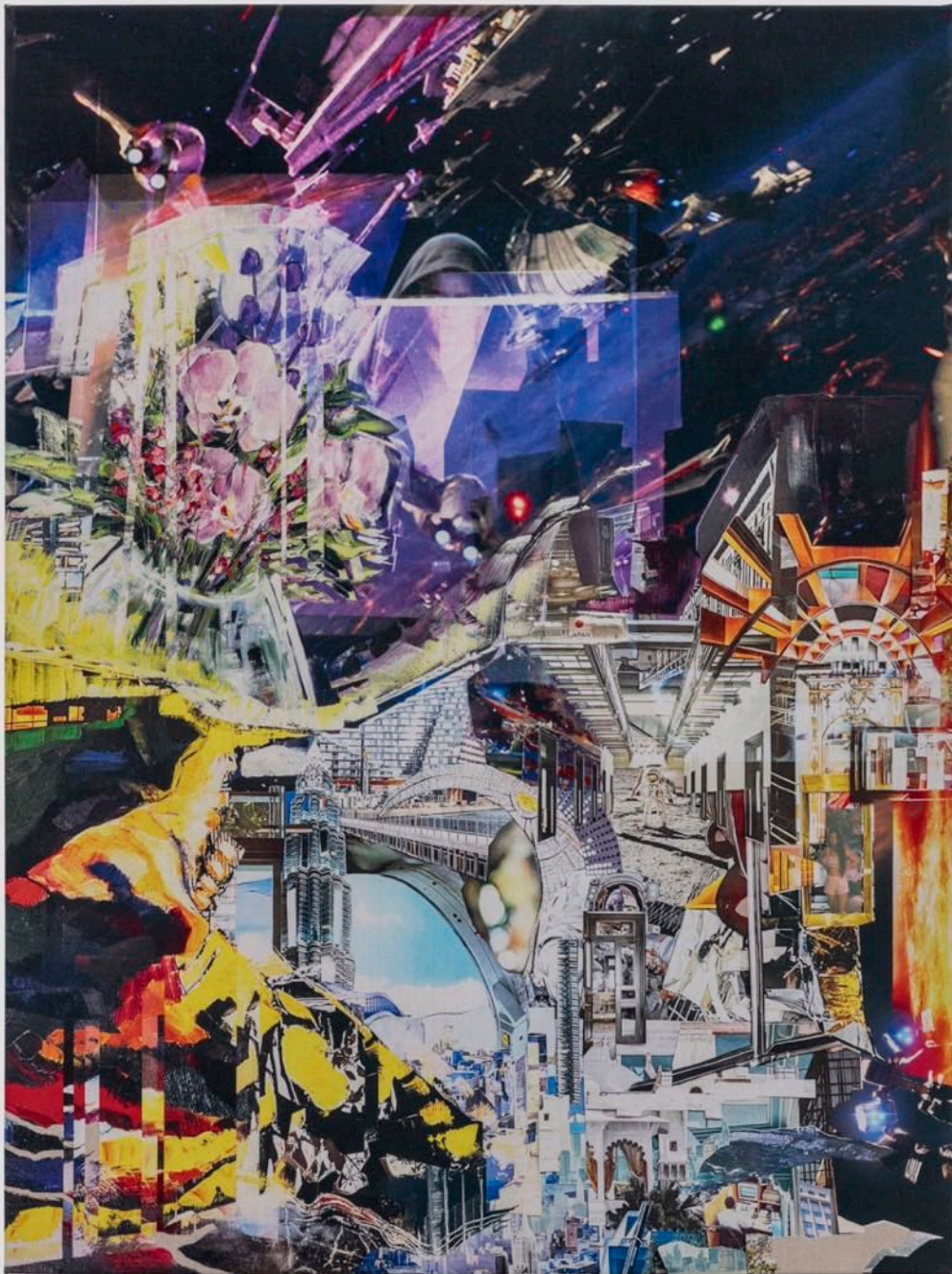
In a world increasingly separating itself from a grounding force, the emotional ramifications of one's psychological existence are explored through both formal process and subject matter. While not immediately evident at first glance, the artist has placed an image of herself in each work. An obvious signifier of the personal nature of the work, but also a nod to the human experience and our emotional capacity to understand the shift from the Information Age into the Age of Imagination.

For more information please contact: info@lowellryanprojects.com



*“Well dreams, they feel real while we're in them, right?
It's only when we wake up that we realize how things are actually strange.
Let me ask you a question, you never really remember the beginning of a dream do you?”*

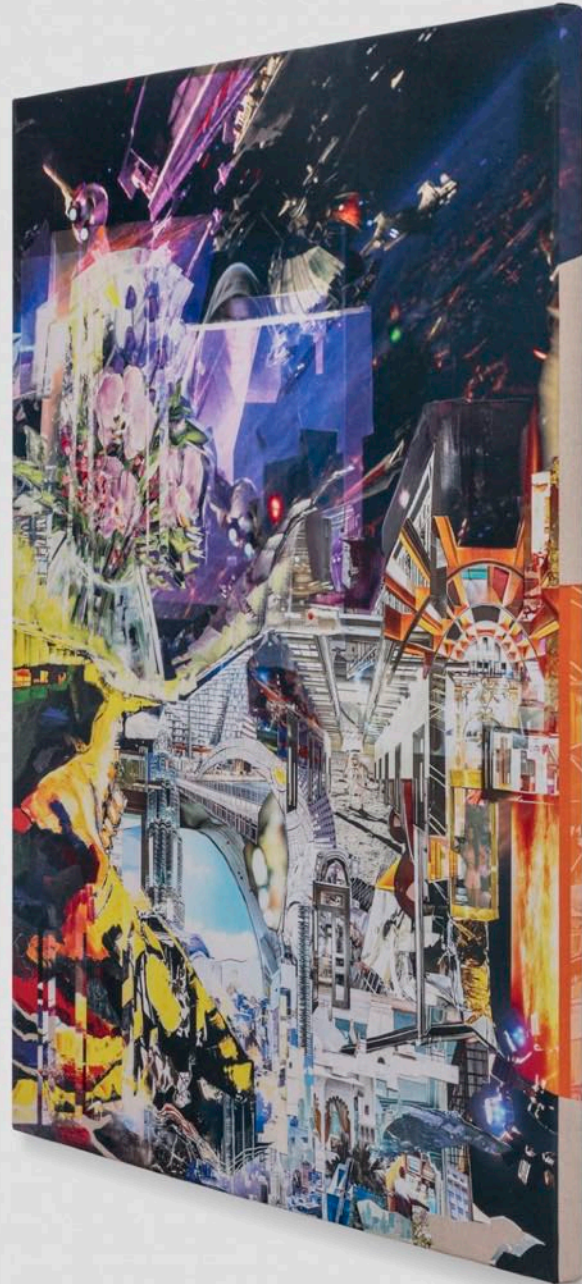
- the character of Cobb in Christopher Nolan's *Inception*



Allison Lu Wang
take my breath [away]
2022
Archival ink on linen
48h x 36w in
121.92h x 91.44w cm
AW-001



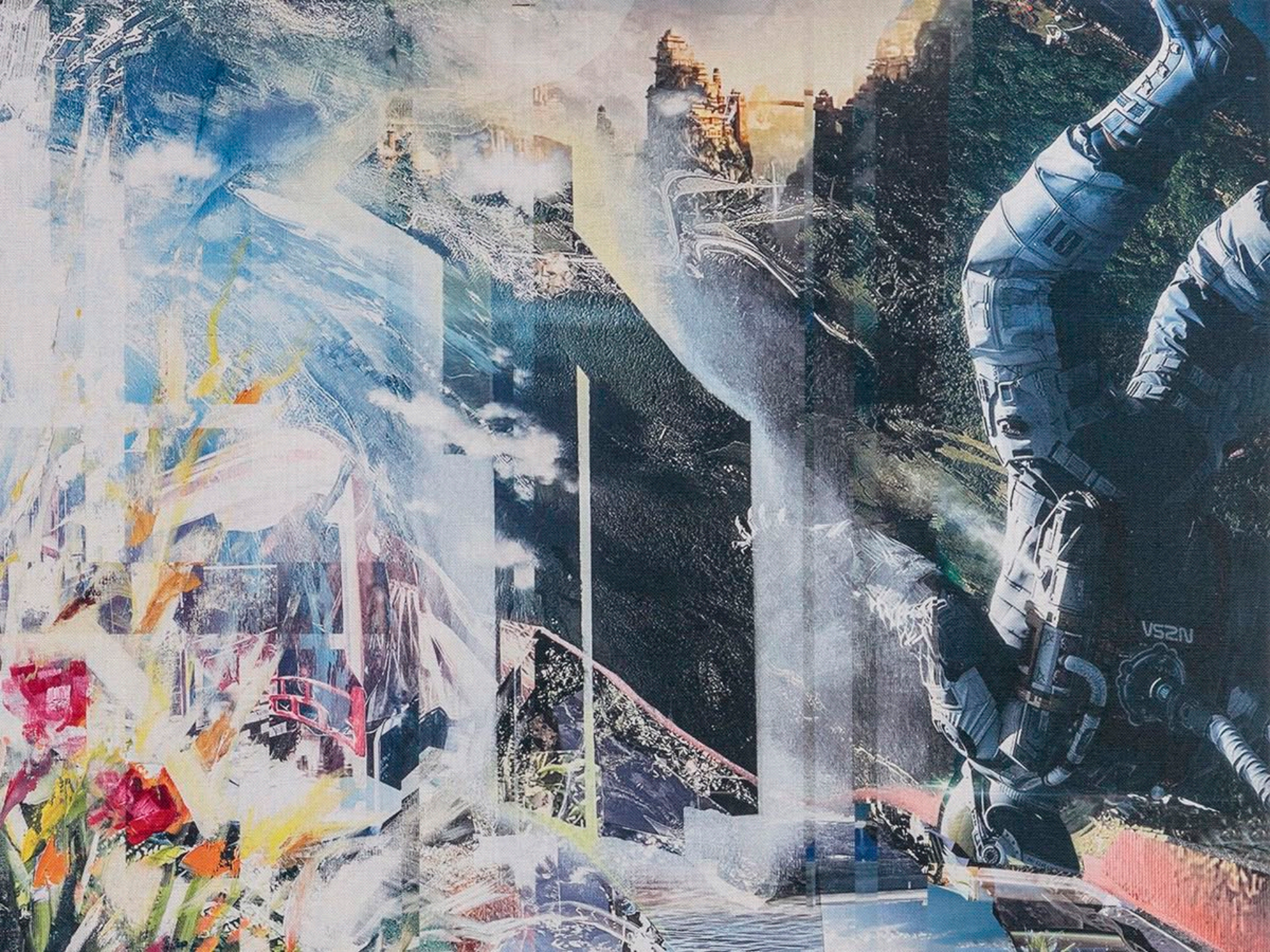
Allison Lu Wang
take my breath [away] (side view)
AW-001



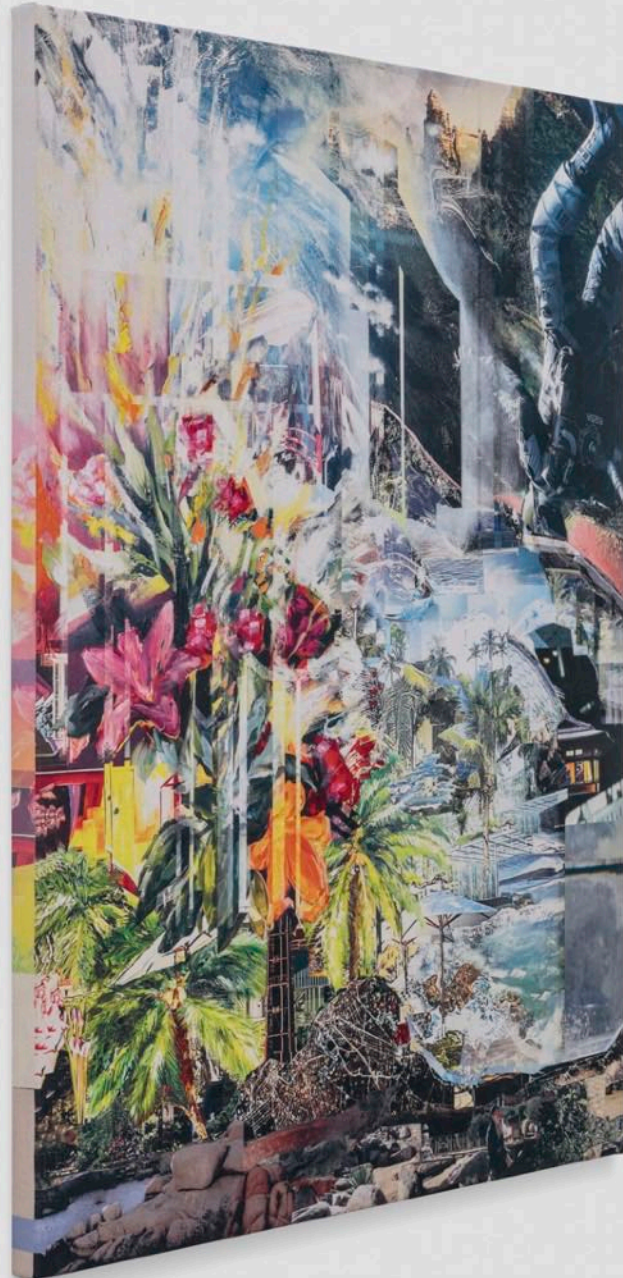


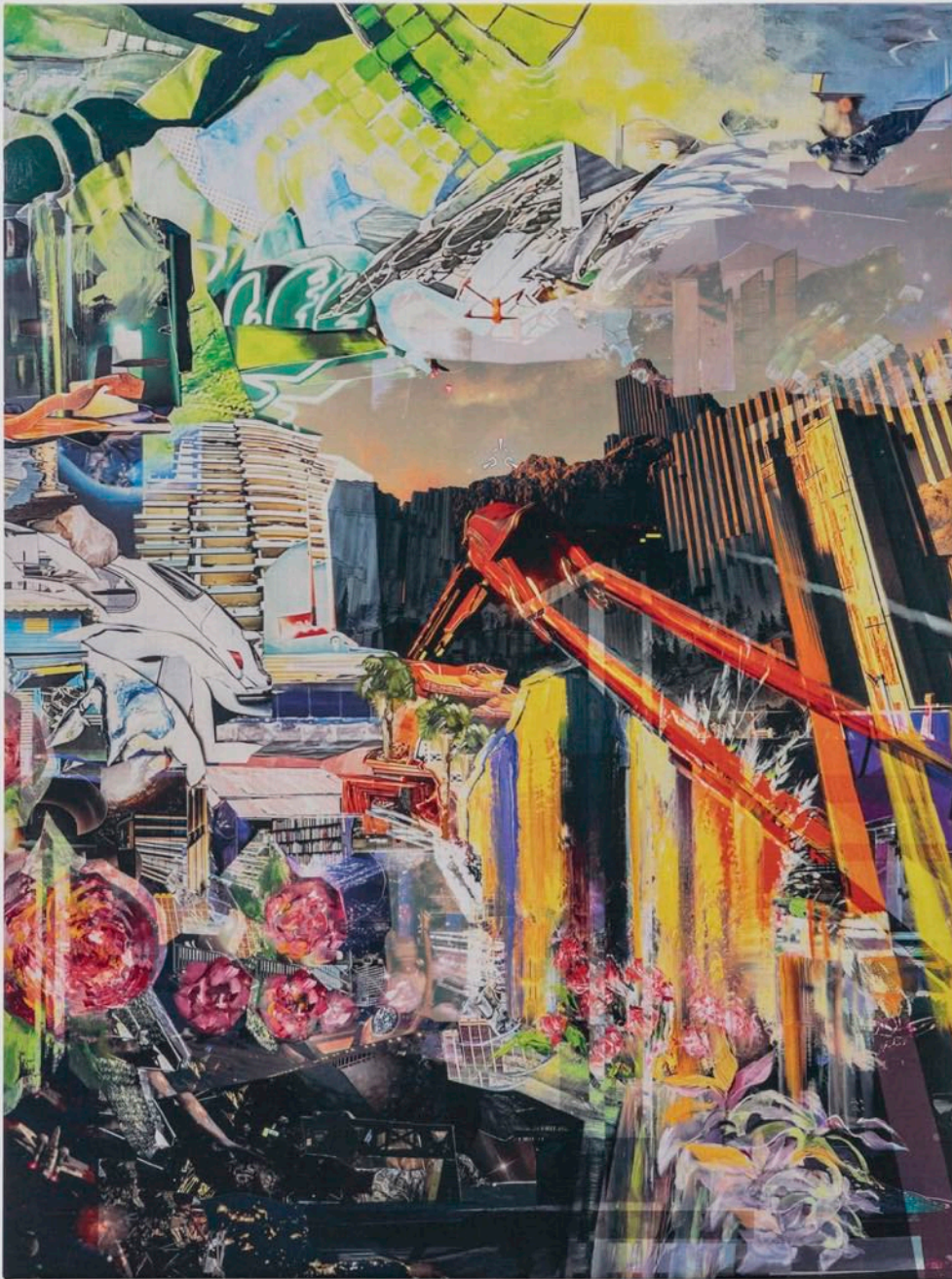


Allison Lu Wang
way out [way out]
2022
Archival ink on linen
48h x 36w in
121.92h x 91.44w cm
AW-002



Allison Lu Wang
way out [way out] (sideview)
AW-002

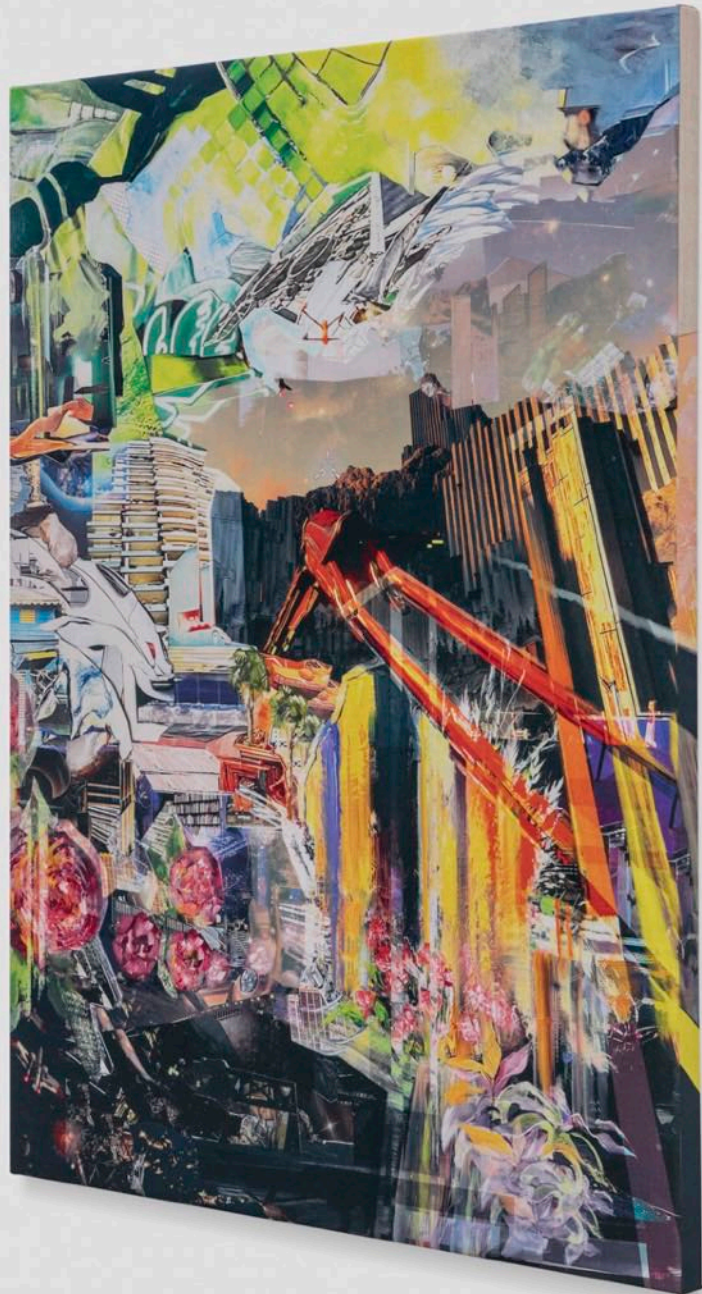




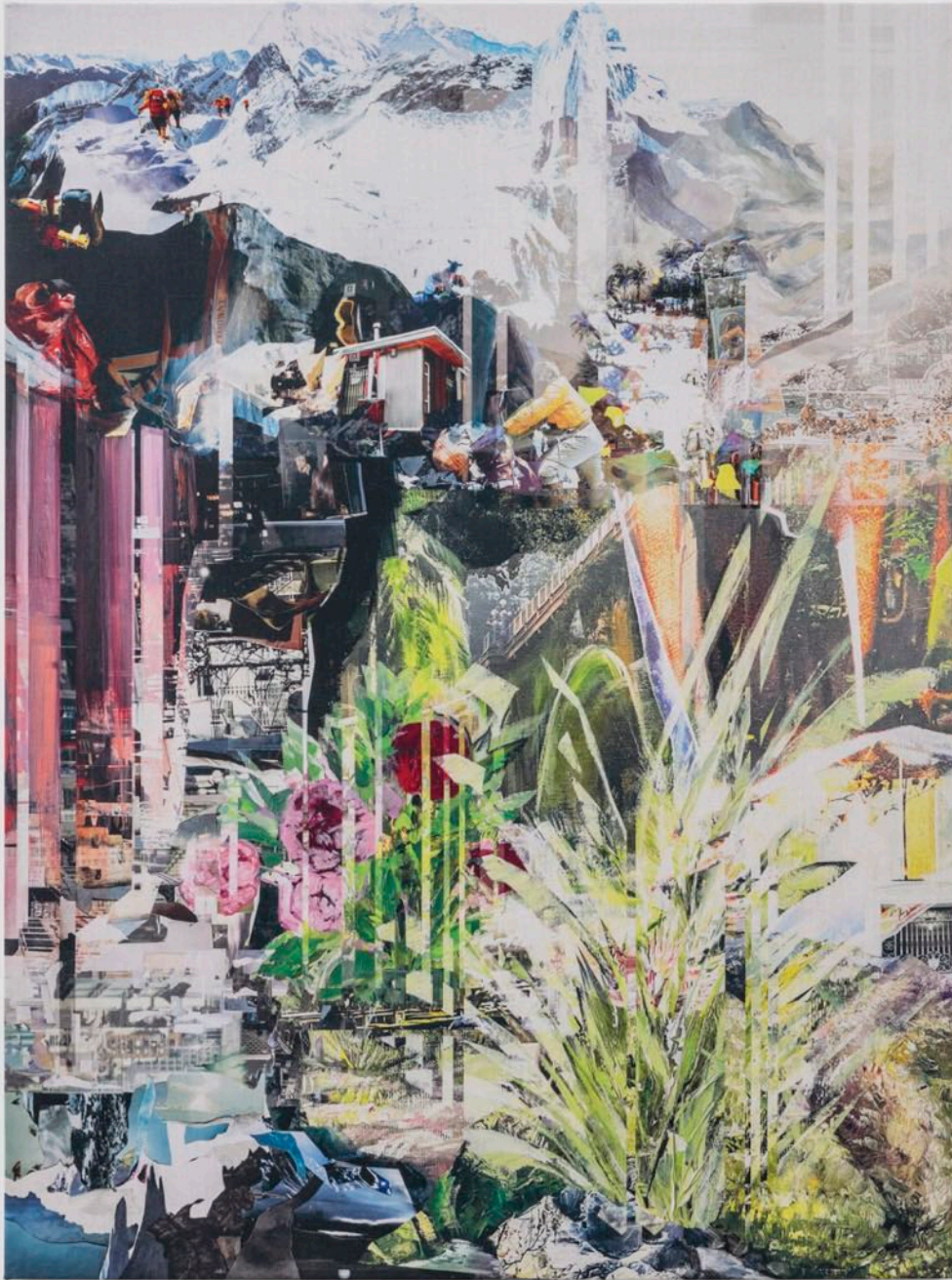
Allison Lu Wang
motion - emotional oranges
2022
Archival ink on linen
48h x 36w in
121.92h x 91.44w cm
AW-003



JAPAN



Allison Lu Wang
motion - emotional oranges (side view)
AW-003



Allison Lu Wang
why'd you only call me when you're high
2022
Archival ink on linen
48h x 36w in
121.92h x 91.44w cm
AW-004



Allison Lu Wang
why'd you only call me when you're high (side view)
AW-004





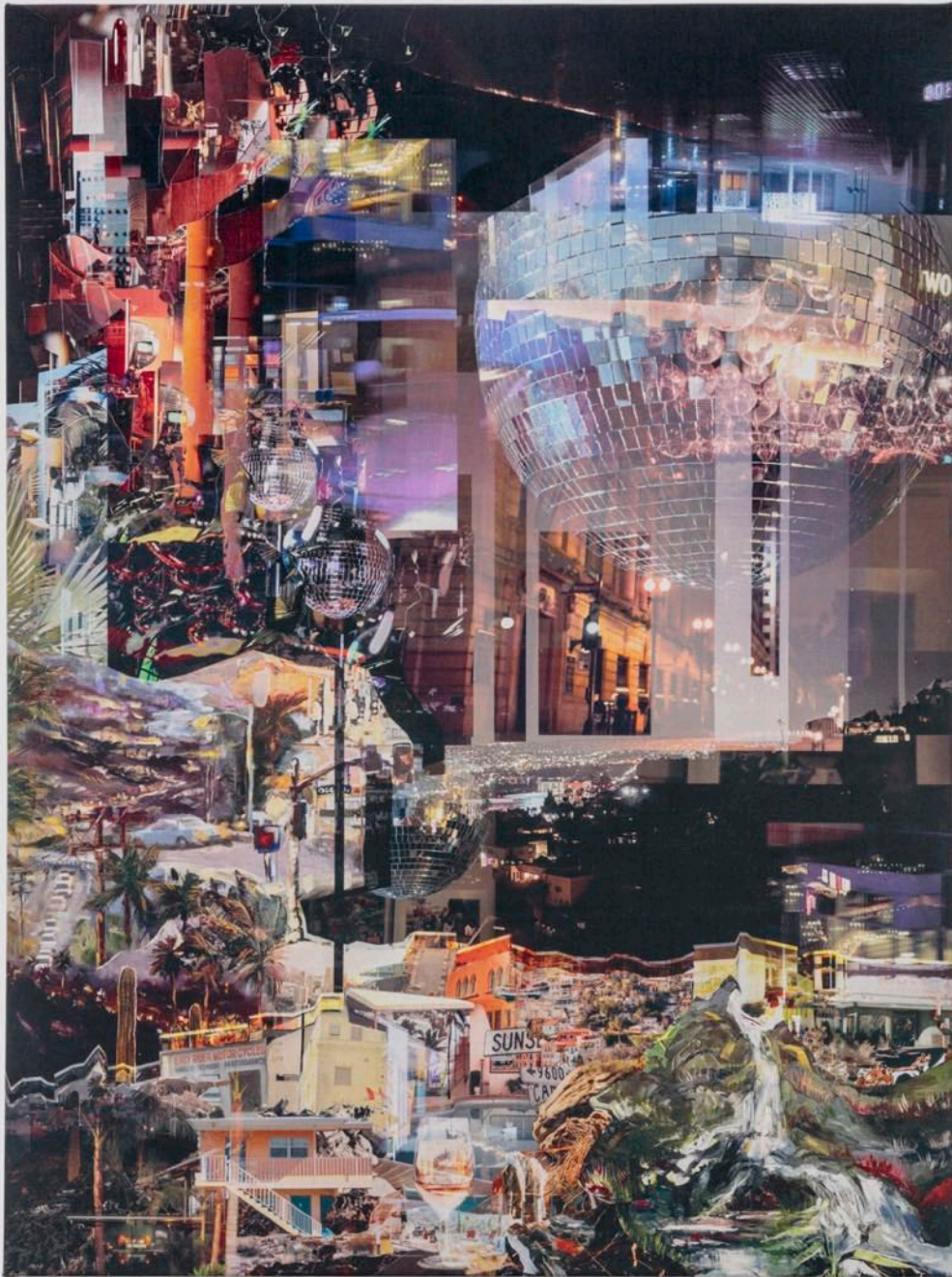
Allison Lu Wang
[and it's] raining again
2022
Archival ink on linen
48h x 36w in
121.92h x 91.44w cm
AW-009





Allison Lu Wang
[and it's] raining again (side view)
AW-009





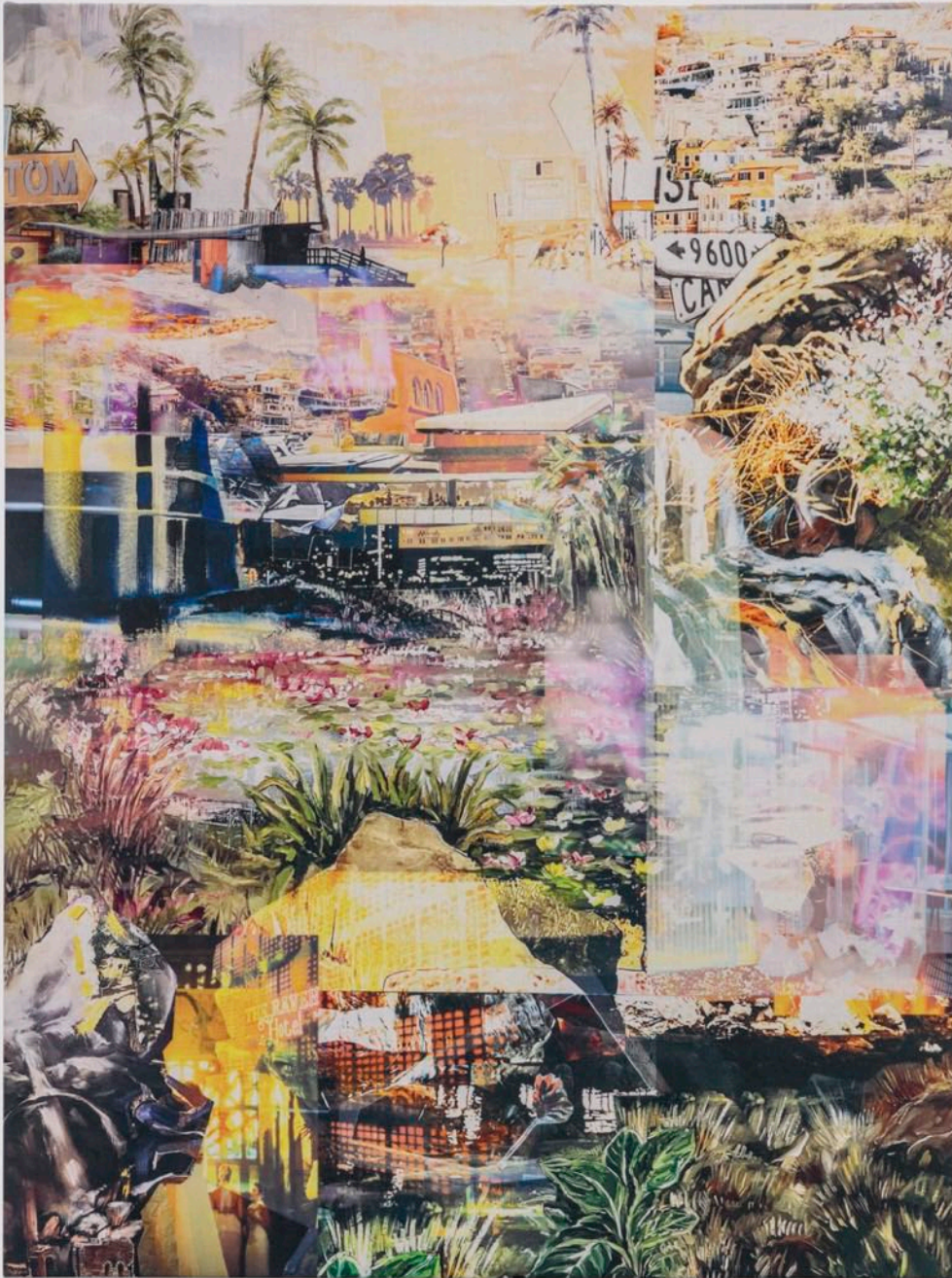
Allison Lu Wang
nightcall
2022
Archival ink on linen
48h x 36w in
121.92h x 91.44w cm
AW-006



Allison Lu Wang
nightcall (side view)
AW-006





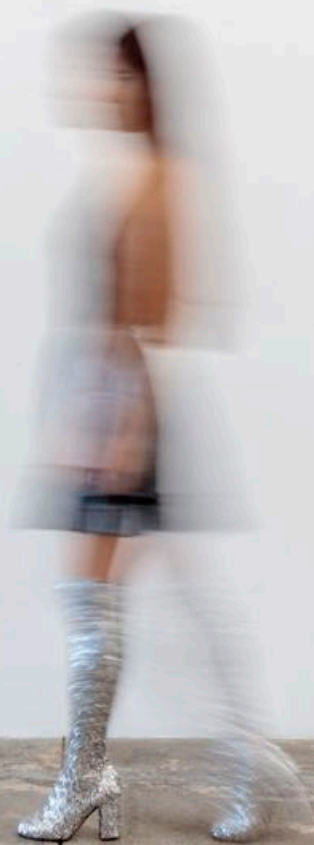


Allison Lu Wang
summertime madness & the gang
2022
Archival ink on linen
48h x 36w in
121.92h x 91.44w cm
AW-007





Allison Lu Wang
summertime madness & the gang (side view)
AW-007



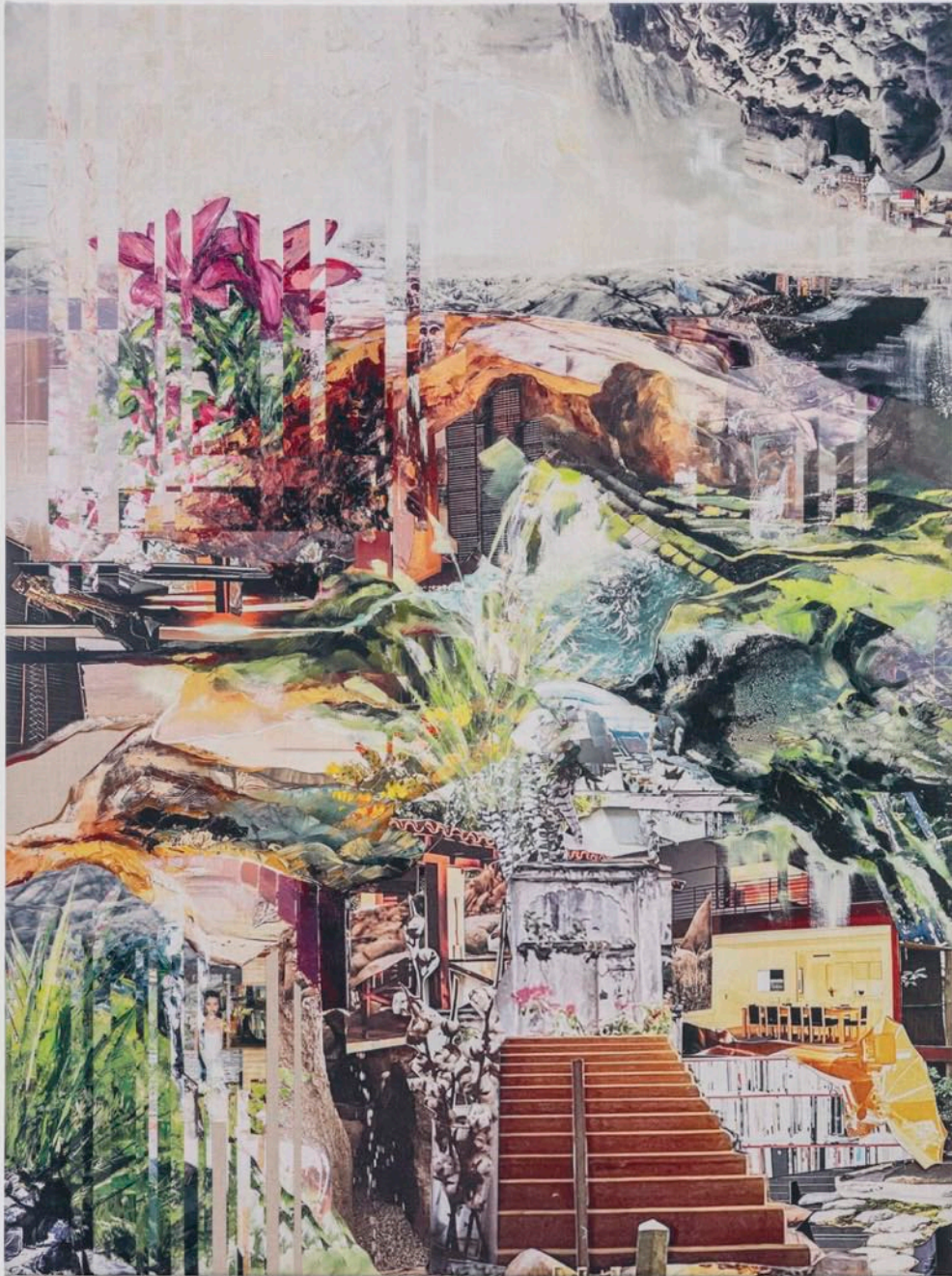


Allison Lu Wang
ocean drive
2022
Archival ink on linen
48h x 36w in
121.92h x 91.44w cm
AW-008



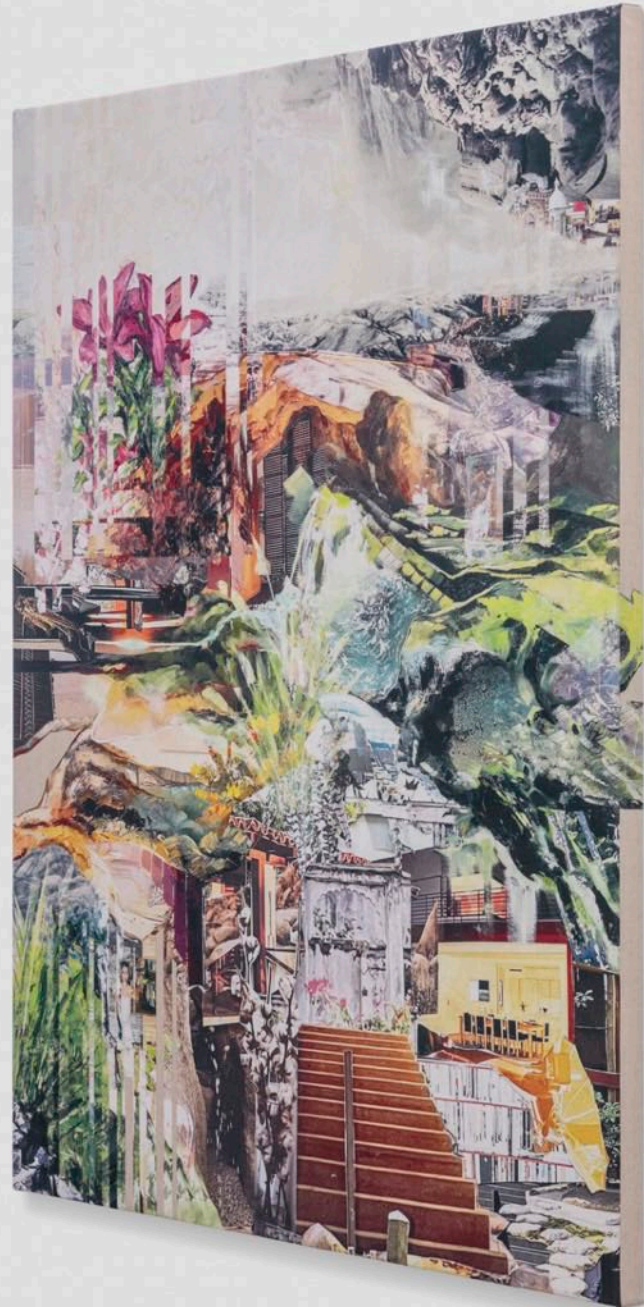
Allison Lu Wang
ocean drive (side view)
AW-008





Allison Lu Wang
slippery ['scuse me]
2022
Archival ink on linen
48h x 36w in
121.92h x 91.44w cm
AW-010





Allison Lu Wang
slippery [\'scuse me] (side view)
AW-010





Allison Lu Wang
*wokeuplikethis**
2022

Archival ink on linen
48h x 36w in
121.92h x 91.44w cm
AW-005





Allison Lu Wang
*wokeuplikethis** (side view)
AW-005

