

Emil Alzamora

Waymaker

May 8 – June 19, 2021

Entering the space we encountered an arrangement of figures that appeared to have arrived from different epochs. The first figure, which seemed to be either human at one time or transitioning to a human state, had feet, a face, arm, and a hand, but the rest of the body was in the form of a carved tree trunk. Another figure, in a state of weightlessness, appeared as if protected by a reflective covering. The third reclining on the ground somewhat contorted with legs propped up. A fourth figure half man, half mechanical parts with head turned gazing toward the stars. Yet another was entering or retreating from the space as if from another dimension, but all that was visible was the arm and some sort of debris. A squatting figure with arms folded overhead was on another level, poised to spring forward or in a state of containment—it was unclear. Two smaller figures were also present, one seemed to be in the process of revelation from its mold, and the other more fully formed in shape but lacking defined features.

Curiously one felt the sense that they were in the midst of carrying out an extra-ordinary ceremonial act, but the purpose of the act was unclear. The protagonists appeared, while acting as a whole, not to be encumbered by the roles of the others but operating as if on instinct.

Emil Alzamora was born in Lima, Peru and lives and works in Beacon, NY. His figurative sculpture practice explores notions of transience, beauty, harmony, uncertainty and hope. Alzamora has exhibited at institutions including the Knoxville Museum of Art, Knoxville, TN; Royal West of England Academy, Bristol, UK; the United Nations Building, New York, NY; and The Queens Museum of Art, New York, NY. His works have been reviewed and discussed in *The New York Times*, *The Brooklyn Rail*, *Boston Metro News*, *Juxtapoz*, *ArteFuse*, *Whitehot Magazine*, and *Cool Hunting*, to name a few.

For more information please contact: info@lowellryanprojects.com





Emil Alzamora
Into the North Forest
2020

Wood, cement, steel, plaster, and epoxy
73h x 20w x 23.5d inches
EM-020

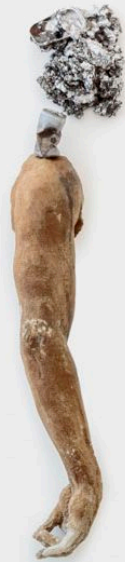


Emil Alzamora
Into the North Forest
2020





Emil Alzamora
Wormhole at Cladh Hallan
2021
Plaster, steel, aluminum, zinc, and epoxy
43.5h x 9w x 6d inches
EM-023

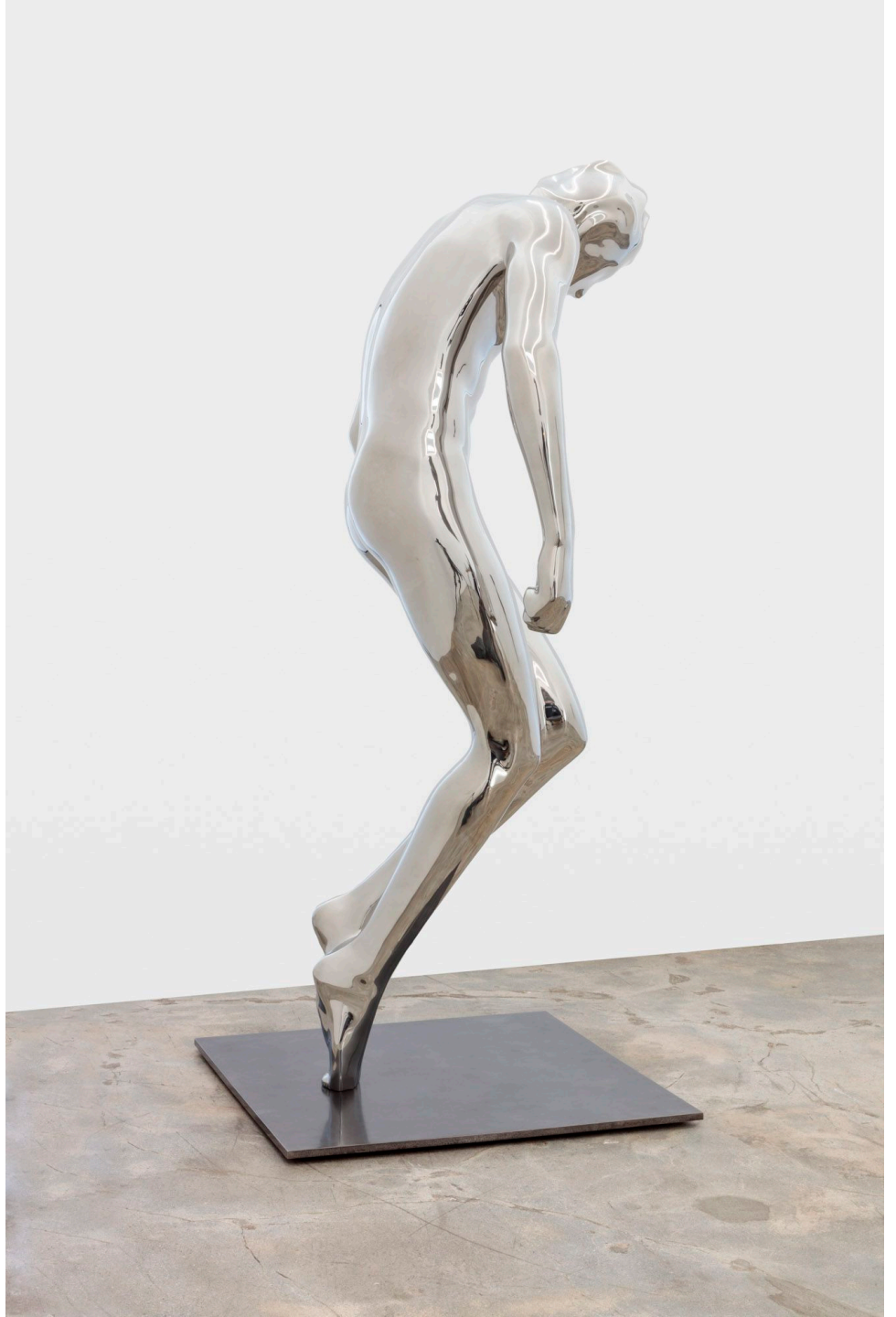




Emil Alzamora
Star Suit
2018
Stainless steel
64.5h x 28w x 28d inches
EM-021



Emil Alzamora
Star Suit
2018



Emil Alzamora
Star Suit
2018





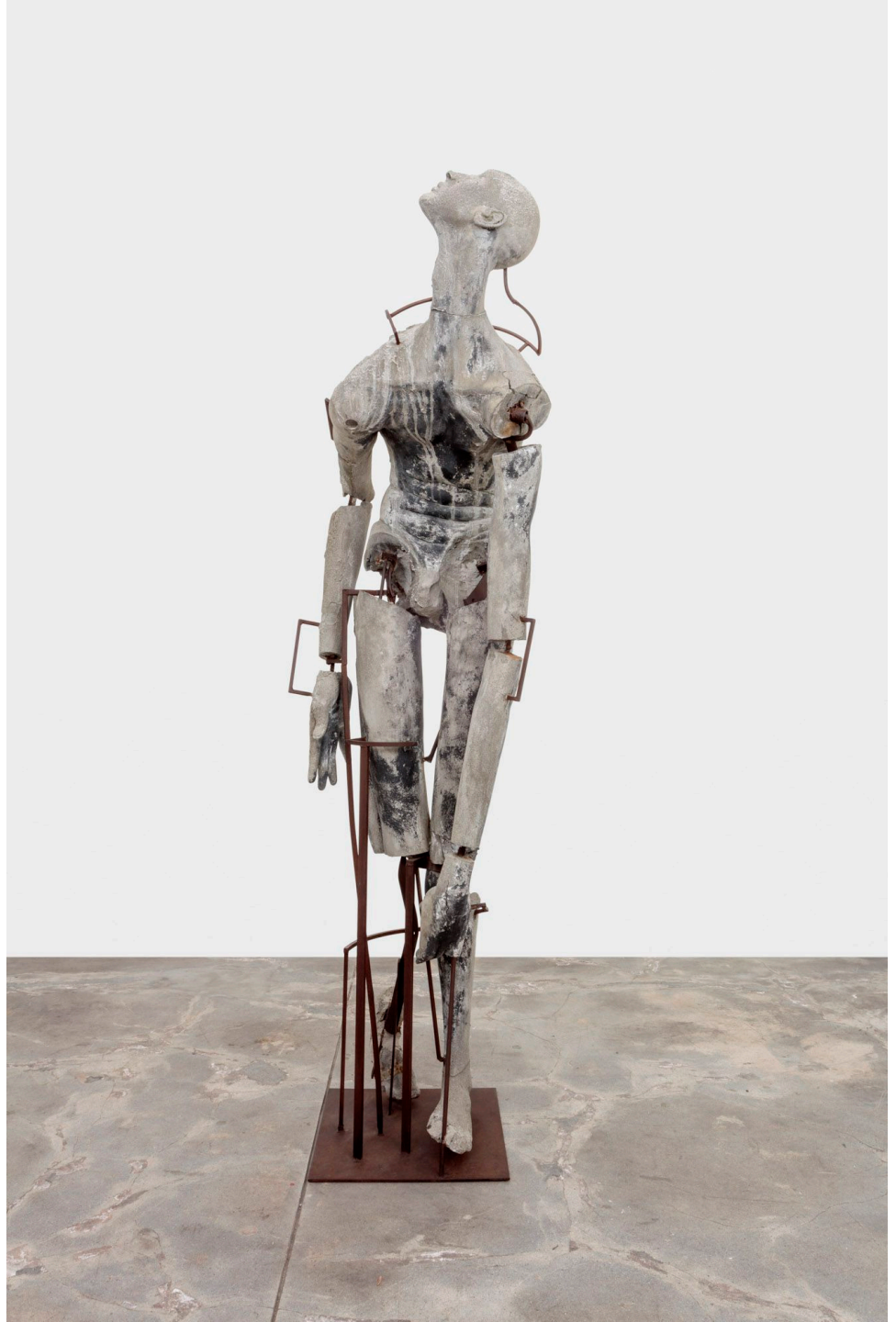


Emil Alzamora
Sky Island
2020
Cement, steel, wood, and epoxy
33h x 25w x 73d inches
EM-022



Emil Alzamora
Sky Island
2020

Emil Alzamora
Waymaker
2021
Steel, plaster, graphite, and wax
82h x 22w x 24d inches
EM-024





Emil Alzamora
Waymaker
2021





Emil Alzamora
A Weight of Calm Descended
2020
Aluminum, plaster, cement, and wax
58.5h x 8w x 8.25d inches
EM-025





Emil Alzamora
A Weight of Calm Descended (detail)
2020



Installation View:
Emil Alzamora, *Waymaker*



Installation View:
Emil Alzamora, *Waymaker*





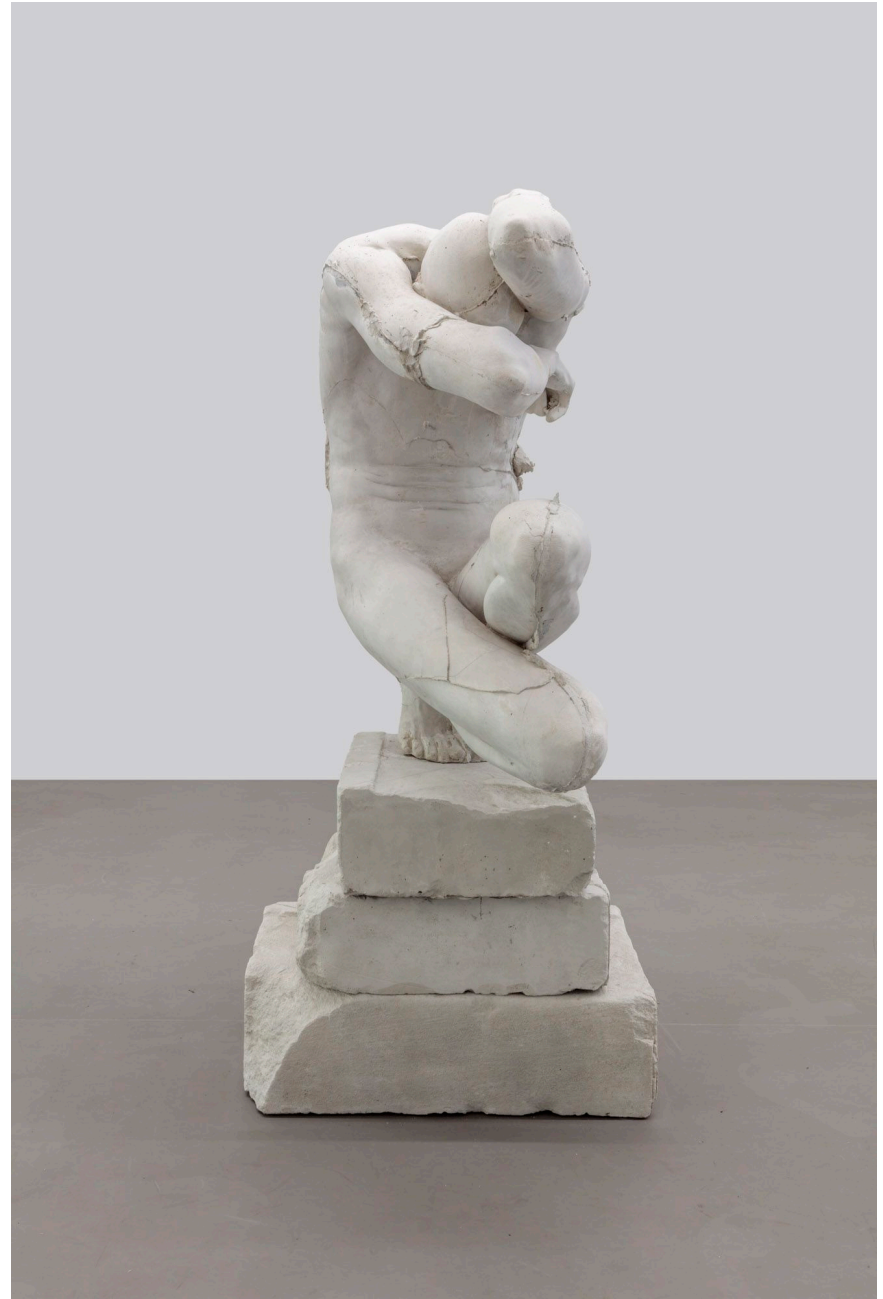
Emil Alzamora
Lesson 2
2019
Ceramic, oil paint, and cement
56.5h x 7.5w x 10.5d inches
EM-026







Emil Alzamora
Hone Redux
2018
Cement and steel
53.5h x 24w x 29d inches
EM-027





LOWELL RYAN PROJECTS info@lowellryanprojects.com 4619 W. Washington Blvd., LA, CA 90016