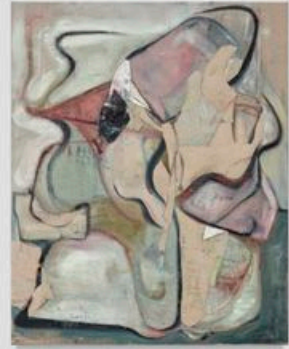


Erin Trefry

Box of Rain

January 8 - February 12, 2022



Lowell Ryan Projects is pleased to present Los Angeles-based artist Erin Trefry's third solo exhibition with the gallery entitled *Box of Rain*. Continuing Trefry's oeuvre involving a method of personal archeology, the exhibition features a series of paintings and sculptures that expand her relationship with form and movement. The title of the exhibition, *Box of Rain*, is a reference to the Grateful Dead song written by Phil Lesh in 1970 for a parent during their final days.

Exploring a means of surrealist automatism, fabric and paint mimic an aerial view of a landscape or map, creating multi-faceted abstract paintings. Oil paint is applied in a range of hues including greens, blues, pinks, reds and black, sometimes in slow soft movements and at other times forming rapid tangles of instinctive shapes. Colors are informed by memories from the artist's childhood home.

Many of the works incorporate sections of linen affixed to the surfaces by straight pins—often concealing most of the layers of paint. The largest painting in the exhibition, *One meter of river*, is a commanding piece layered with monochromatic tan and beige linen forms. A current of green oil paint hides beneath a constellation of pins—the energetic mark making of scraped and reworked paint exposing a record of gesture and time. Like a landmass on water, the paint acts as both a watery ground and a chasm under the cloth covering, a shifting Pangaea.

The paintings in this exhibition are accompanied by four sculptures. Hand-thrown ceramic slabs collaborate with inherited and found objects, such as bookends, brass drawer knobs, indigo textiles and purse handles. Alluding further to the cyclical nature of life, these works explore the importance of connectivity and balance.

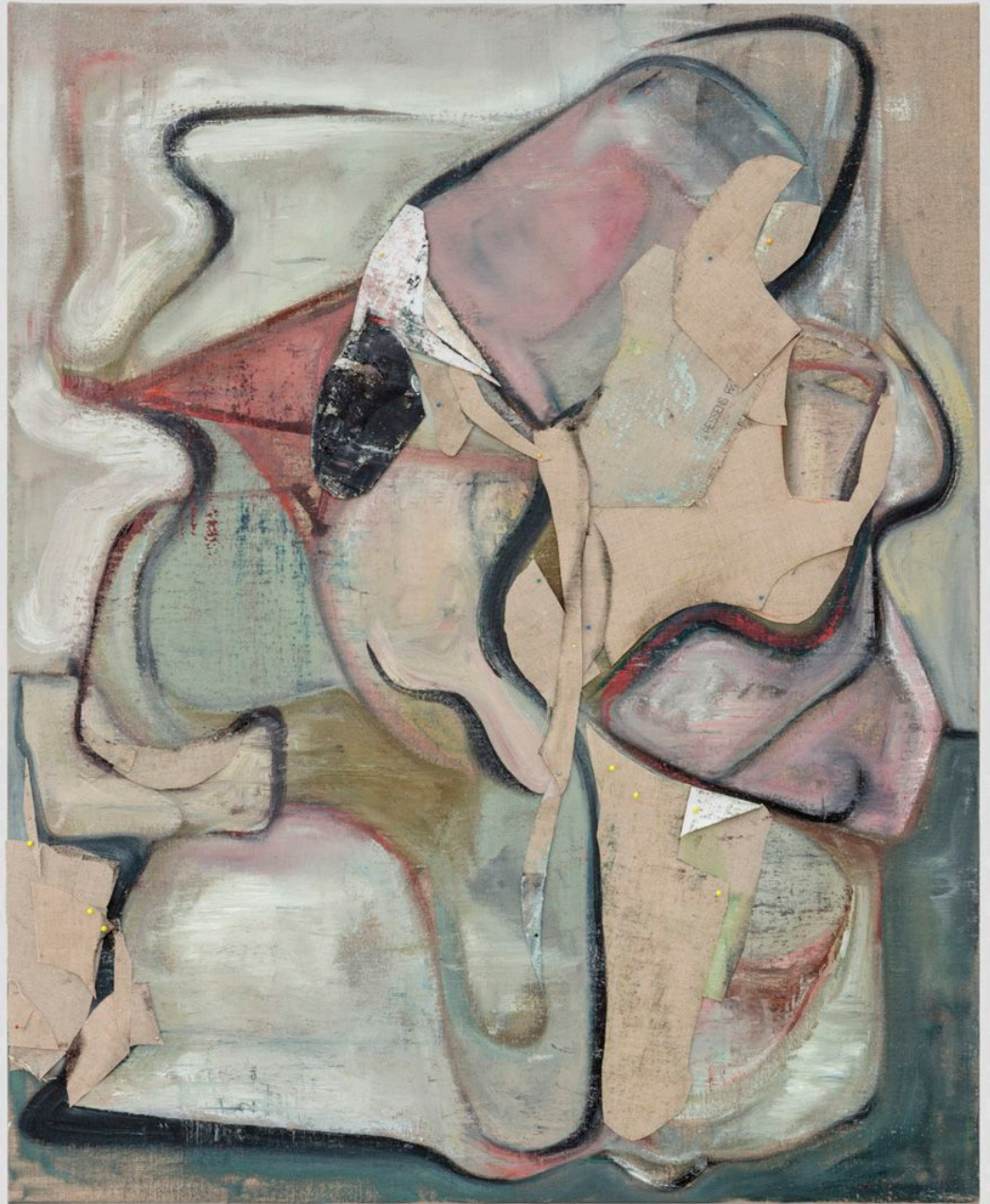
Erin Trefry lives and works in Los Angeles, CA. Trefry's personally charged practice includes paintings, sculptures and assemblage that combine ceramic, inherited objects and clothing to create totems, mask-like wall pieces and transient structures. She received her BFA from Maryland Institute College of Art, Baltimore, MD. She has exhibited with galleries and institutions in Southern California including the Harris Gallery at La Verne University, Lowell Ryan Projects, No Gallery, TSA LA, 0-0 LA, Institute of Contemporary Art, Los Angeles, Monte Vista Projects, ODD ARK•LA, Eastside International, Big Pictures Los Angeles, and Los Angeles Contemporary Exhibitions (LACE). Trefry's works have been reviewed and discussed in publications including *Artforum*, *The Los Angeles Times*, *LA Weekly* and *Art and Cake*.

Erin Trefry
Walk into splintered sunlight
2021
Oil, linen, and pins on canvas
46h x 40w in
117h x 102w cm
ET-043





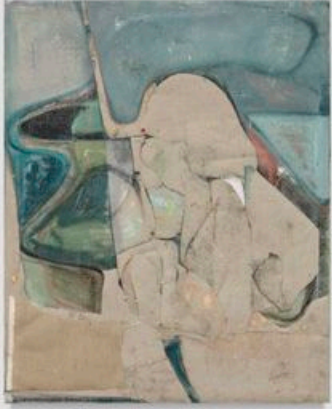
Erin Trefry
Fugue & Counterpoint
2021
Oil, linen, and pins on canvas
34h x 27 1/2w in
86h x 70w cm
ET-044





Erin Trefry
The Influence of Neptune
2021
Oil, linen, and pins on linen
34h x 27 1/2w in
86h x 70w cm
ET-045

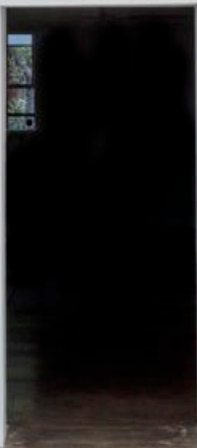




Erin Trefry
One Meter of River
2021
Oil, linen, pins, and hat pins on linen
72h x 48w in
183h x 122w cm
ET-046



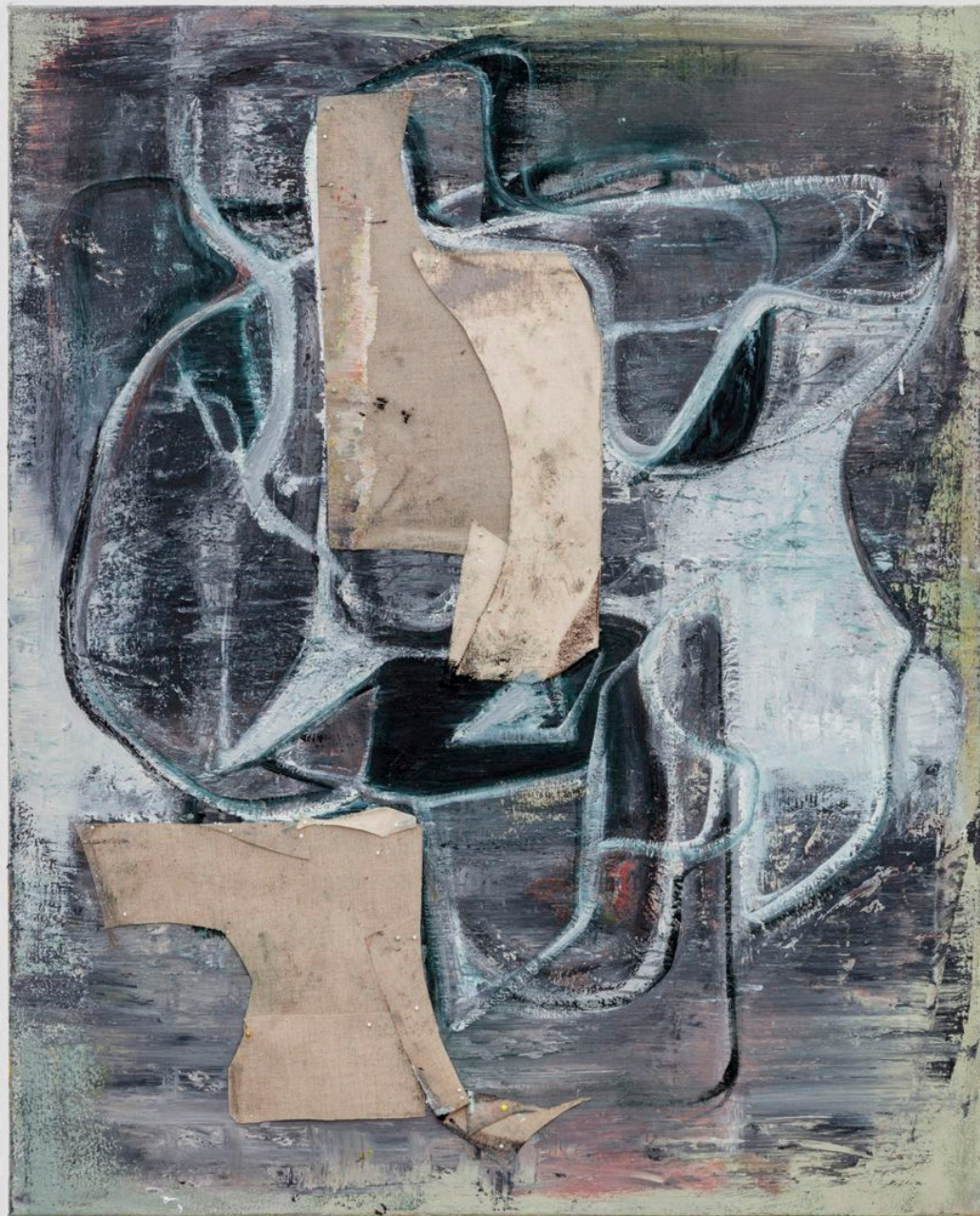






Erin Trefry
They moved like bison
2021
Oil, linen, and pins on canvas
46h x 40w in
117h x 102w cm
ET-037

Erin Trefry
Pentimento
2021
Oil, canvas, linen, and pins on canvas
34h x 27 1/2w in
86h x 70w cm
ET-047





Erin Trefry
Pentimento (detail)
2021



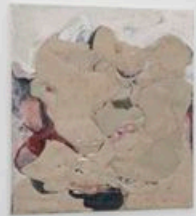
Erin Trefry
Bloomdido I
2021
Oil on canvas
46h x 40w in
117h x 102w cm
ET-040



Erin Trefry
Bloomdido II
2021
Oil on canvas
46h x 40w in
117h x 102w cm
ET-048







Erin Trefry
Propeller moonlet relevé
2021
Oil, linen, leather, stoneware, and pins on canvas
34h x 27 1/2w in
86h x 70w cm
ET-036

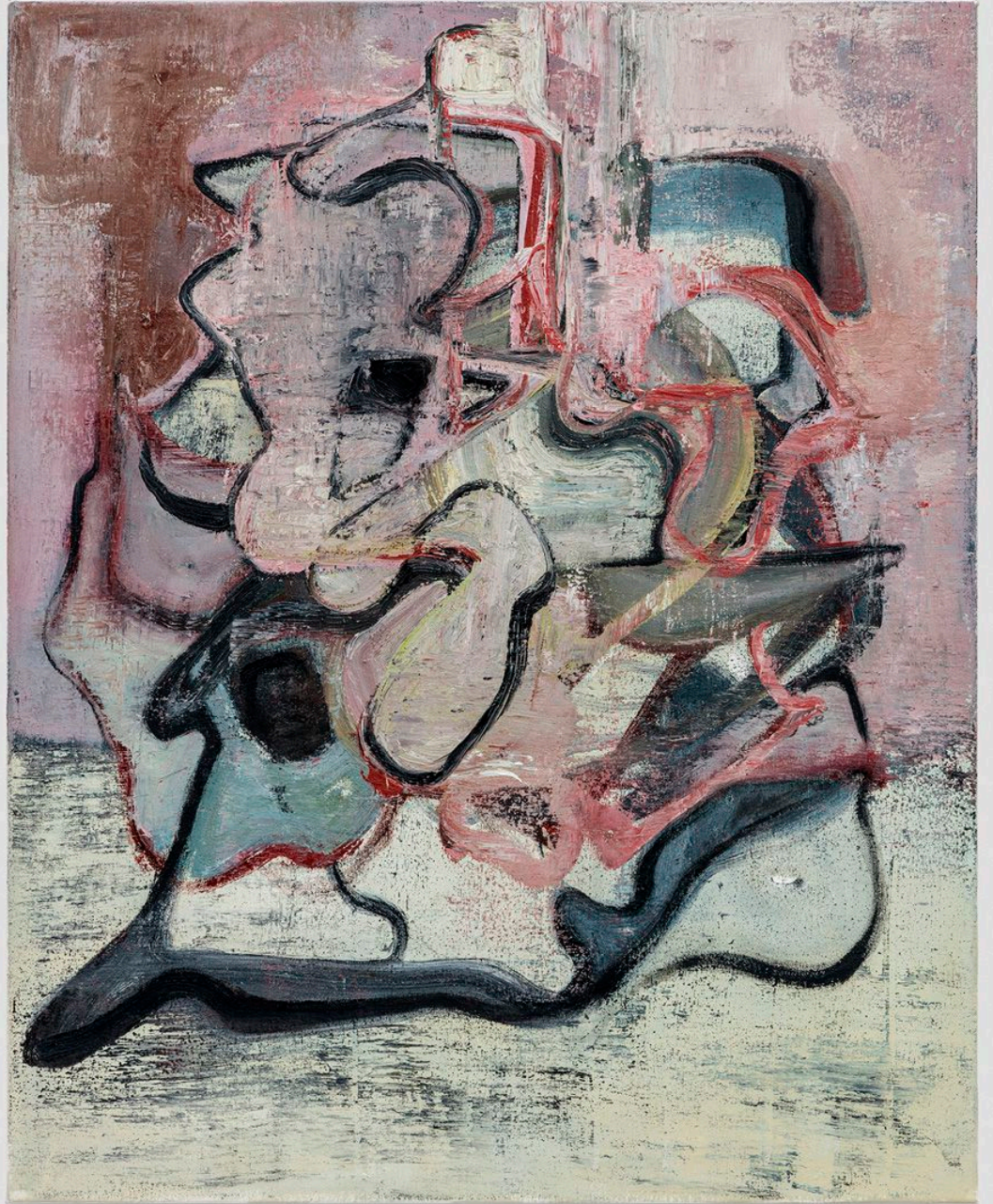




Erin Trefry
Innermost locomotor satellite
2021
Oil on canvas
34h x 27 1/2w in
86h x 70w cm
ET-049



Erin Trefry
Inner moon arabesque
2021
Oil on canvas
34h x 27 1/2w in
86h x 70w cm
ET-039





Erin Trefry
In a round
2021
Oil, linen, and pins on linen
34h x 27 1/2w in
86h x 70w cm
ET-058



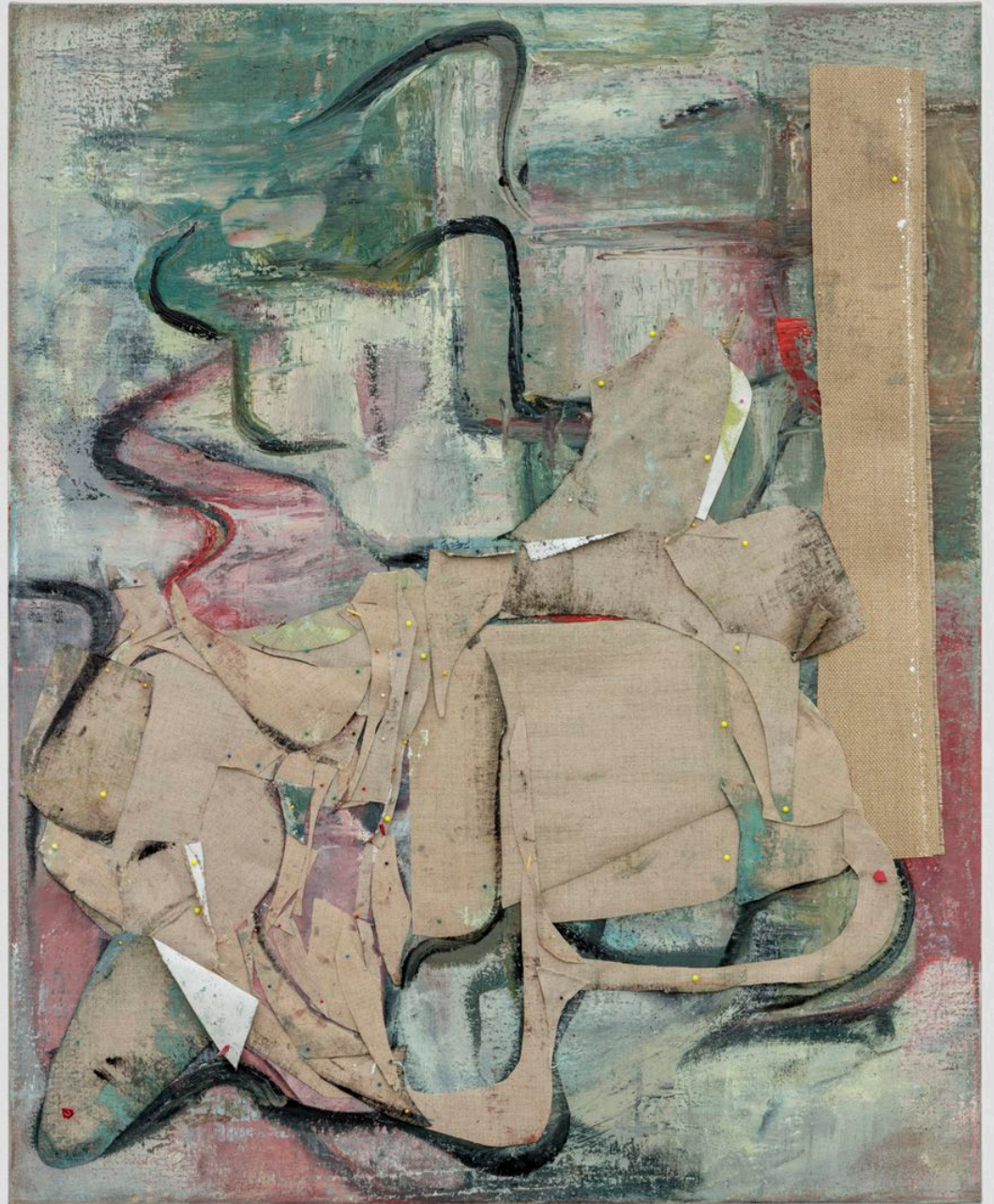


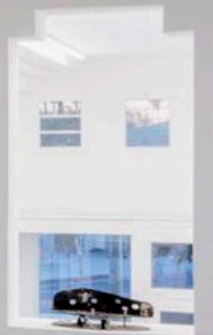
Erin Trefry
With due veneration
2021
Stoneware and palo santo stick
8h x 20w x 10d in / 20h x 51w x 25d cm
ET-042



Erin Trefry
With due veneration
2021

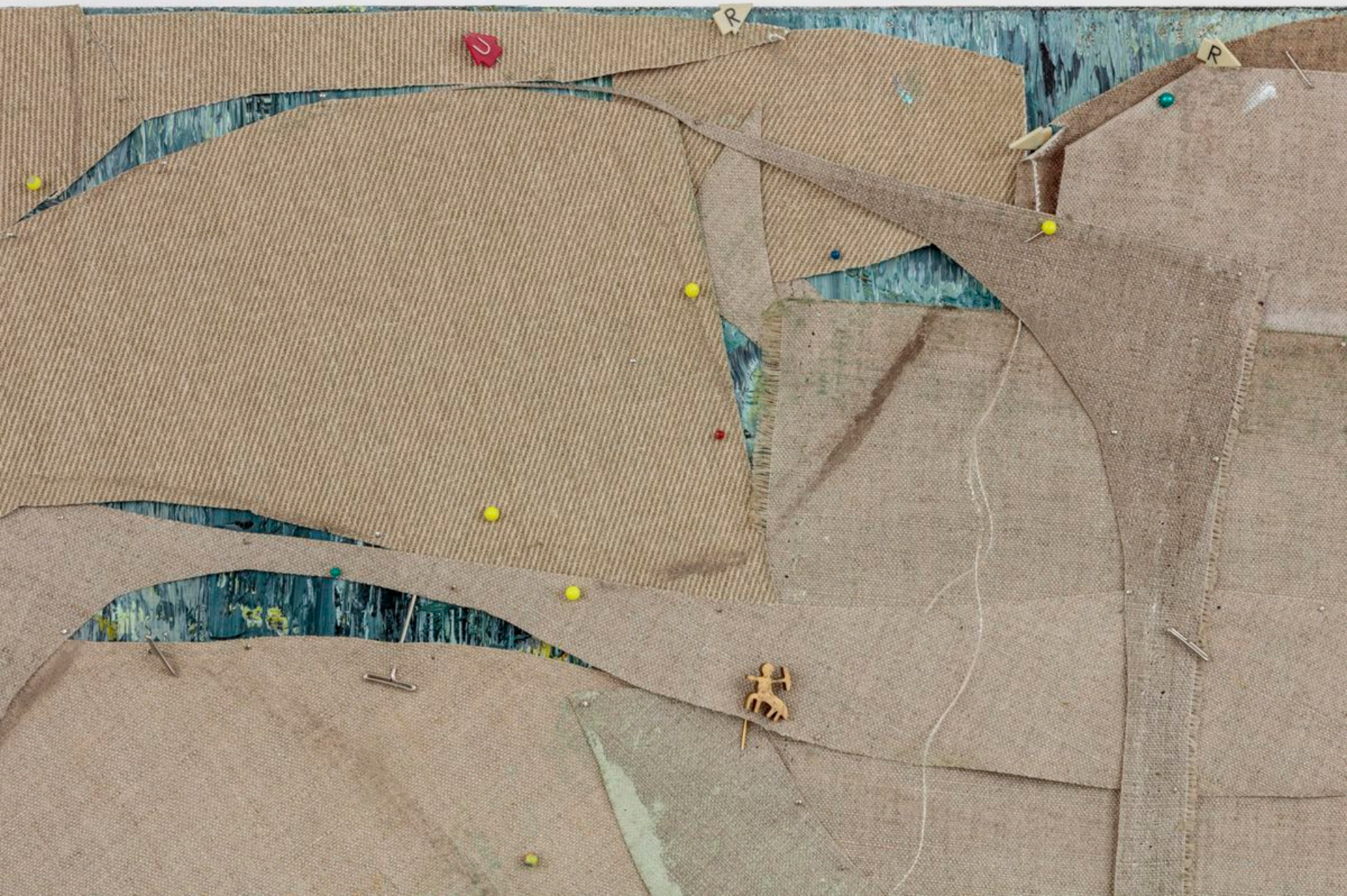
Erin Trefry
Minor falls and major lifts
2021
Oil, linen, and pins on linen
34h x 27 1/2w in
86h x 70w cm
ET-057







Erin Trefry
Box of Rain
2021
Oil, linen, pins, hat pins, and earth from the Dead Sea on linen
51 1/4h x 114 1/4w in
130h x 290w cm
ET-050



Erin Trefry
Box of Rain (detail)
2021





Erin Trefry
Figure Words II
2019-2021
Ceramic, purse handle, obi wrap, lamp shade,
drawer pull, and concrete on cinder block
10h x 15w x 10d in
25h x 38w x 25d cm
ET-051



Erin Trefry
Figure Words II
2019-2021



Erin Trefry
Figure Words III
2019-2021
Ceramic, metal bracket and drawer pull
11 1/4h x 11w x 10 1/2d in
29h x 28w x 27d cm
ET-052



Erin Trefry
Figure Words III
2019-2021



Erin Trefry
Figure Words I
2019-2021
Ceramic, bookends, and drawer pull on cinder blocks
13 1/2h x 13 1/2w x 9d in
34h x 34w x 23d cm
ET-053

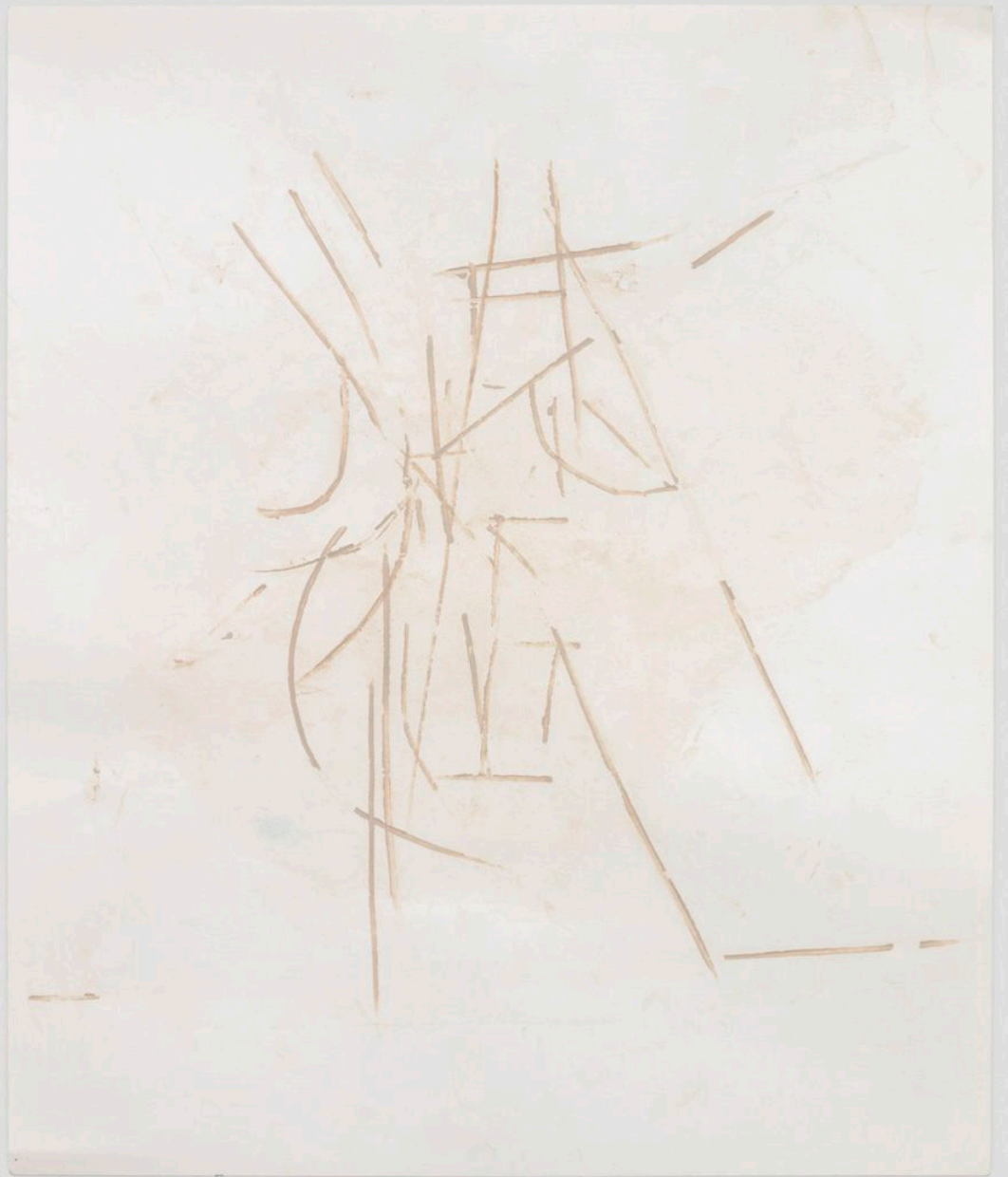


Erin Trefry
Figure Words I
2019-2021

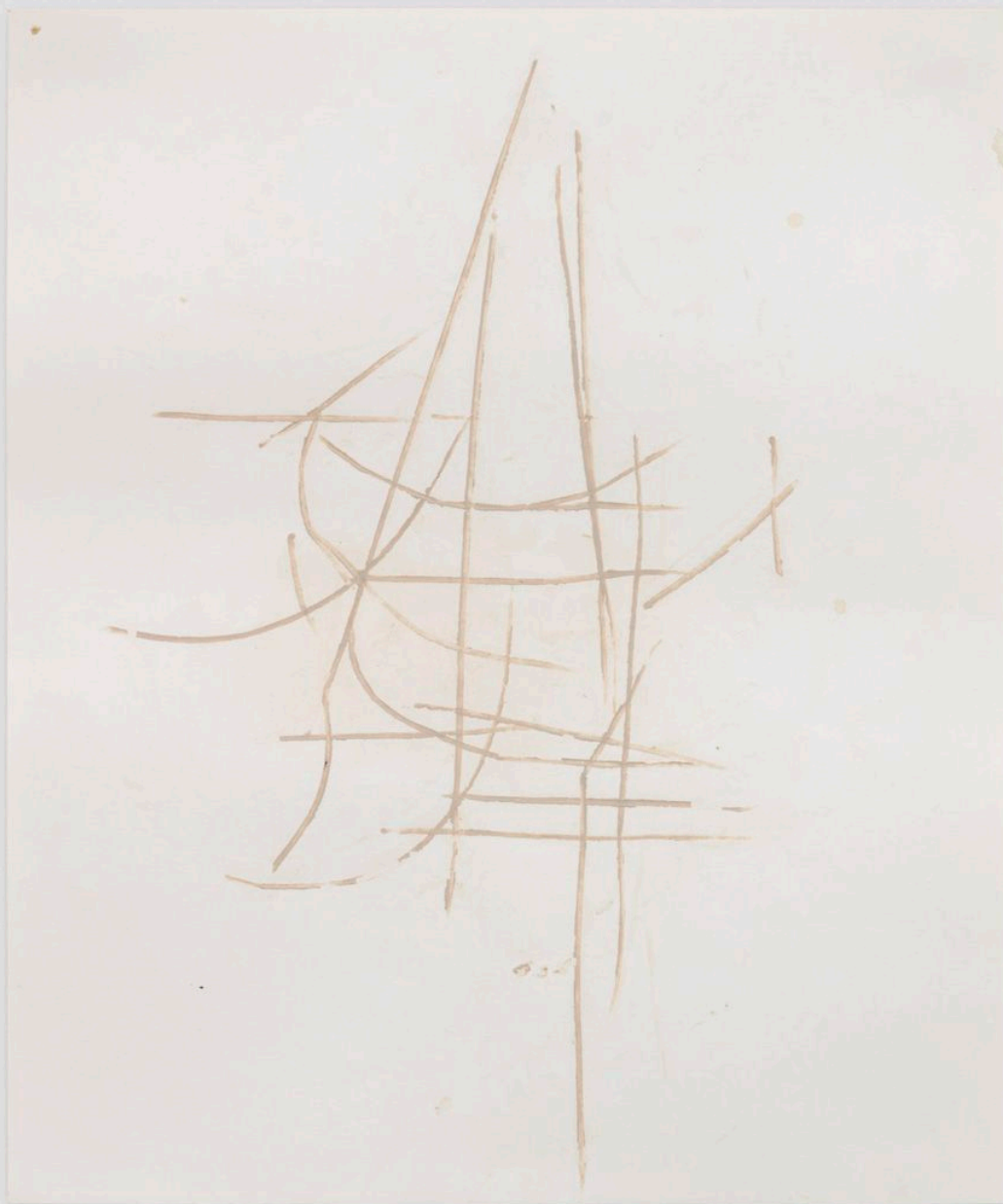




Erin Trefry
Automatism: Clay Drawing IV
2021
Clay on paper
15 1/4h x 13w in
39h x 33w cm
ET-054



Erin Trefry
Automatism: Clay Drawing III
2021
Clay on paper
15 1/4h x 13w in
39h x 33w cm
ET-055



Erin Trefry
Automatism: Clay Drawing II
2021
Clay on paper
15 1/4h x 13w in
39h x 33w cm
ET-056

